

## Mouse IgG2b Isotype Control, FITC Conjugated mAb

Catalog No: #28279

Orders: [order@signalwayantibody.com](mailto:order@signalwayantibody.com)Support: [tech@signalwayantibody.com](mailto:tech@signalwayantibody.com)

## Description

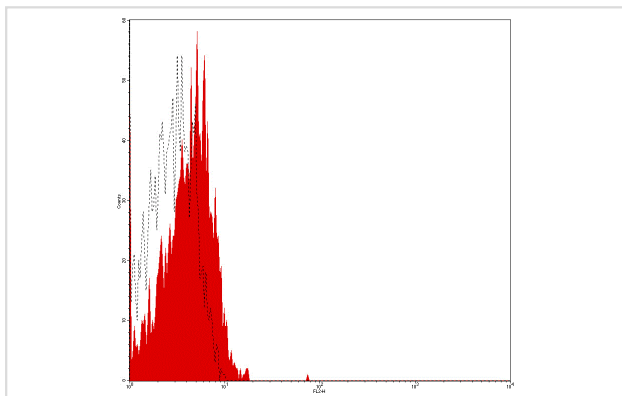
|                    |   |
|--------------------|---|
| Product Name       | Mouse IgG2b Isotype Control, FITC Conjugated mAb                                      |
| Host Species       | Mouse   |
| Clonality          | Monoclonal  |
| Clone No.          | 4A2B5   |
| Isotype            | IgG2b   |
| Applications       | FC  |
| Species Reactivity | Hu  |
| Conjugates         | FITC  |
| Target Name        | IgG2b   |
| Formulation        | Phosphate-buffered solution, pH 7.4, containing 0.09% sodium azide and 0.2% (w/v) BSA |
| Storage            | Store at 4°C. DO NOT FREEZE. LIGHT SENSITIVE MATERIAL.                                |

## Application Details

Vol.per.Test: 10 µl/Test

Notice: This reagent has been pre-diluted for use at recommended volume per test in flow cytometry analysis. Typically add 10µl of this reagent to 100µl of experimental sample with 1 X 10<sup>6</sup> cells per test. Please refer to the detailed protocol when you perform a test.

## Images



Human peripheral blood lymphocytes analyzed with FITC  
Mouse IgG2b Isotype Control mAb

## Background

This antibody can be used as a mouse IgG2b isotype control in flow cytometry and other applications.

Note: This product is for in vitro research use only