

PPA1 antibody

Catalog No: #22152

Orders: order@signalwayantibody.com

Support: tech@signalwayantibody.com

Description

Product Name	PPA1 antibody
Host Species	Rabbit
Clonality	Polyclonal
Purification	Purified by antigen-affinity chromatography.
Applications	WB IHC IF
Species Reactivity	Hu
Immunogen Type	Recombinant protein
Immunogen Description	Recombinant protein fragment contain a sequence corresponding to a region within amino acids 1 and 259 of PPA1
Target Name	PPA1
Accession No.	Swiss-Prot:Q15181Gene ID:5464
Uniprot	Q15181
GeneID	5464;
Concentration	0.9mg/ml
Formulation	Supplied in 0.1M Tris-buffered saline with 10% Glycerol (pH7.0). 0.01% Thimerosal was added as a preservative.
Storage	Store at -20°C for long term preservation (recommended). Store at 4°C for short term use.

Application Details

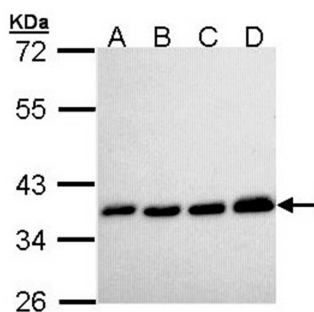
Predicted MW: 33kd

Western blotting: 1:500-1:3000

Immunohistochemistry: 1:100-1:500

Immunofluorescence: 1:100-1:200

Images



Sample (30 ug of whole cell lysate)

A: H1299

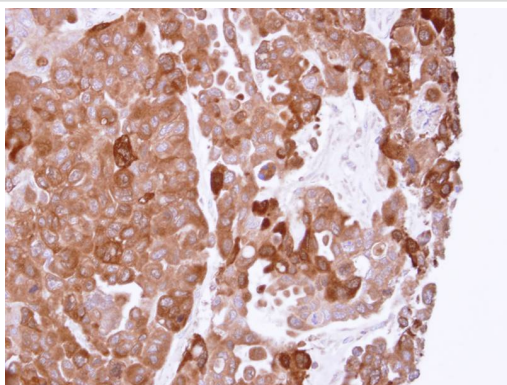
B: HeLa

C: Hep G2

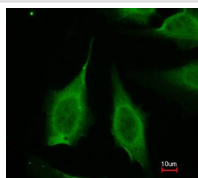
D: Molt-4

12% SDS PAGE

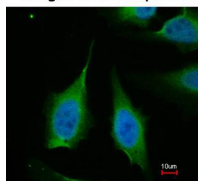
Primary antibody diluted at 1: 10000



Immunohistochemical analysis of paraffin-embedded OVCAR3 xenograft, using PPA1 antibody at 1: 500 dilution.



Merged with DNA probe



Immunofluorescence analysis of paraformaldehyde-fixed HeLa, using PPA1 antibody at 1: 200 dilution.

Background

The protein encoded by this gene is a member of the inorganic pyrophosphatase (PPase) family. PPases catalyze the hydrolysis of pyrophosphate to inorganic phosphate, which is important for the phosphate metabolism of cells. Studies of a similar protein in bovine suggested a cytoplasmic localization of this enzyme. [provided by RefSeq]

Note: This product is for in vitro research use only