

APG4B Antibody

Catalog No: #36757

Orders: order@signalwayantibody.com

Support: tech@signalwayantibody.com

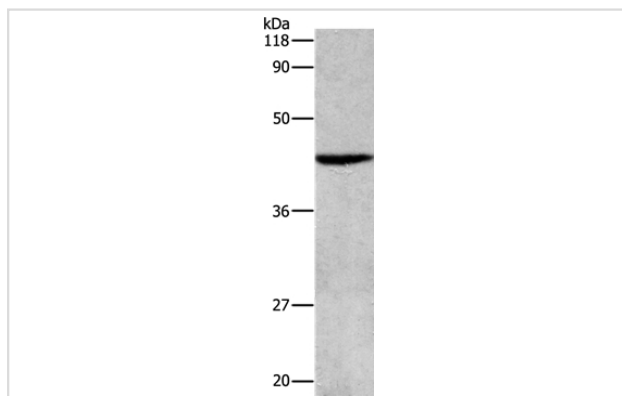
Description

Product Name	APG4B Antibody
Host Species	Rabbit
Clonality	Polyclonal
Purification	Antigen affinity purification.
Applications	WB
Species Reactivity	Hu Ms
Specificity	The antibody detects endogenous levels of total APG4B protein.
Immunogen Type	Peptide
Immunogen Description	Synthetic peptide corresponding to residues near the N terminal of human Autophagy-related protein 4 homolog B
Target Name	APG4B
Other Names	APG4B; AUTL1
Accession No.	Swiss-Prot#: Q9Y4P1NCBI Gene ID: 23192Gene Accssion: NP_037457
Uniprot	Q9Y4P1
GeneID	23192;
SDS-PAGE MW	43kd
Concentration	0.9mg/ml
Formulation	Rabbit IgG in pH7.4 PBS, 0.05% NaN ₃ , 40% Glycerol.
Storage	Store at -20°C

Application Details

Western blotting: 1:500-1:2000

Images



Gel: 8%SDS-PAGE
Lysate: 40ug Hela cell
Primary antibody: 1/500 dilution
Secondary antibody dilution: 1/8000
Exposure time: 2 minutes

Background

Autophagy is the process by which endogenous proteins and damaged organelles are destroyed intracellularly. Autophagy is postulated to be

essential for cell homeostasis and cell remodeling during differentiation, metamorphosis, non-apoptotic cell death, and aging. Reduced levels of autophagy have been described in some malignant tumors, and a role for autophagy in controlling the unregulated cell growth linked to cancer has been proposed. This gene encodes a member of the autophagin protein family. The encoded protein is also designated as a member of the C-54 family of cysteine proteases. Alternate transcriptional splice variants, encoding different isoforms, have been characterized.

Note: This product is for in vitro research use only