

AQP2 Antibody

Catalog No: #36759

Orders: order@signalwayantibody.comSupport: tech@signalwayantibody.com

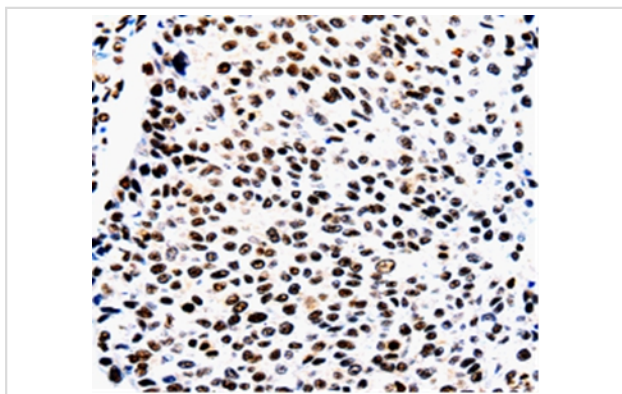
Description

Product Name	AQP2 Antibody
Host Species	Rabbit
Clonality	Polyclonal
Purification	Antigen affinity purification.
Applications	IHC
Species Reactivity	Hu
Specificity	The antibody detects endogenous levels of total AQP2 protein.
Immunogen Type	Peptide
Immunogen Description	Synthetic peptide corresponding to residues near the C terminal of human Aquaporin-2
Target Name	AQP2
Other Names	AQP-2; AQP-CD; AQP2; MGC34501
Accession No.	Swiss-Prot#: P41181NCBI Gene ID: 359Gene Accssion: NP_000477
Uniprot	P41181
GeneID	359;
Concentration	2.5mg/ml
Formulation	Rabbit IgG in pH7.4 PBS, 0.05% NaN ₃ , 40% Glycerol.
Storage	Store at -20°C

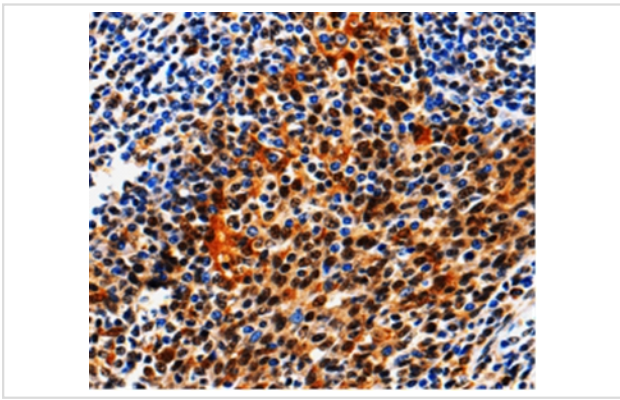
Application Details

Immunohistochemistry: 1:100-1:300

Images



Immunohistochemical analysis of paraffin-embedded Human tonsil cancer tissue using #36759 at dilution 1/100.



Immunohistochemical analysis of paraffin-embedded Human liver cancer tissue using #36759 at dilution 1/100.

Background

The basic job of aquaporin 2 is to reabsorb water from the urine while its being removed from the blood by the kidney. Aquaporin 2 is in kidney epithelial cells and usually lies dormant in intracellular vesicle membranes, but when it is needed vasopressin binds to the cell surface vasopressin receptor, activating a signaling pathway that causes the aquaporin 2 containing vesicles to fuse with the plasma membrane so the aquaporin 2 can be used by the cell.

Note: This product is for in vitro research use only