

## ASCL1 Antibody

Catalog No: #36763

Orders: [order@signalwayantibody.com](mailto:order@signalwayantibody.com)Support: [tech@signalwayantibody.com](mailto:tech@signalwayantibody.com)

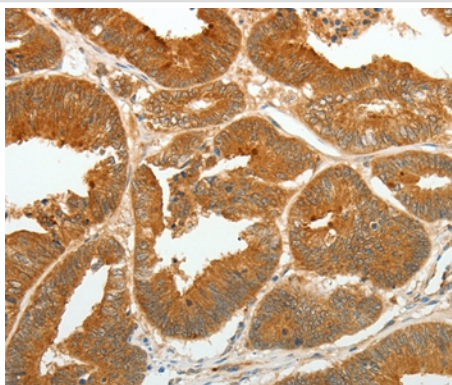
## Description

Product Name	ASCL1 Antibody
Host Species	Rabbit
Clonality	Polyclonal
Purification	Antigen affinity purification.
Applications	IHC
Species Reactivity	Hu Ms Rt
Specificity	The antibody detects endogenous levels of total ASCL1 protein.
Immunogen Type	Peptide
Immunogen Description	Synthetic peptide corresponding to residues near the C terminal of human achaete-scute complex homolog 1 (Drosophila)
Target Name	ASCL1
Other Names	ASH1; HASH1; MASH1; bHLHa46
Accession No.	Swiss-Prot#: P50553NCBI Gene ID: 429Gene Accssion: NP_004307
Uniprot	P50553
GeneID	429;
Concentration	1mg/ml
Formulation	Rabbit IgG in pH7.4 PBS, 0.05% NaN <sub>3</sub> , 40% Glycerol.
Storage	Store at -20°C

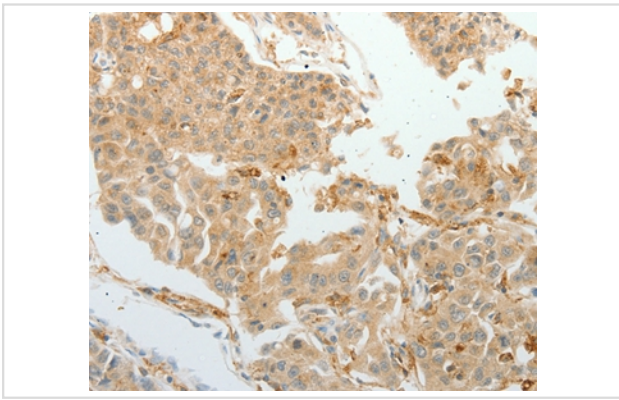
## Application Details

Immunohistochemistry: 1:25-1:100

## Images



Immunohistochemical analysis of paraffin-embedded Human lung cancer tissue using #36763 at dilution 1/30.



Immunohistochemical analysis of paraffin-embedded Human colon cancer tissue using #36763 at dilution 1/30.

## Background

This gene encodes a member of the basic helix-loop-helix (BHLH) family of transcription factors. The protein activates transcription by binding to the E box (5'-CANNTG-3'). Dimerization with other BHLH proteins is required for efficient DNA binding. This protein plays a role in the neuronal commitment and differentiation and in the generation of olfactory and autonomic neurons. Mutations in this gene may contribute to the congenital central hypoventilation syndrome (CCHS) phenotype in rare cases.

Note: This product is for in vitro research use only