

FGF2 Antibody

Catalog No: #36769

Orders: order@signalwayantibody.com

Support: tech@signalwayantibody.com

Description

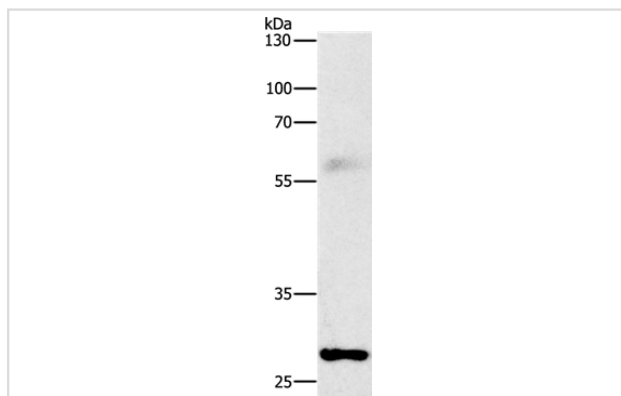
Product Name	FGF2 Antibody
Host Species	Rabbit
Clonality	Polyclonal
Purification	Antigen affinity purification.
Applications	WB IHC
Species Reactivity	Hu Ms Rt
Specificity	The antibody detects endogenous levels of total FGF2 protein.
Immunogen Type	Peptide
Immunogen Description	Synthetic peptide corresponding to a region derived from internal residues of human Fibroblast growth factor 2
Target Name	FGF2
Other Names	BFGF; FGFB; FGF-2; HBGF-2
Accession No.	Swiss-Prot#: P09038NCBI Gene ID: 2247Gene Accssion: NP_001997
Uniprot	P09038
GeneID	2247;
SDS-PAGE MW	31kd
Concentration	1mg/ml
Formulation	Rabbit IgG in pH7.4 PBS, 0.05% NaN ₃ , 40% Glycerol.
Storage	Store at -20°C

Application Details

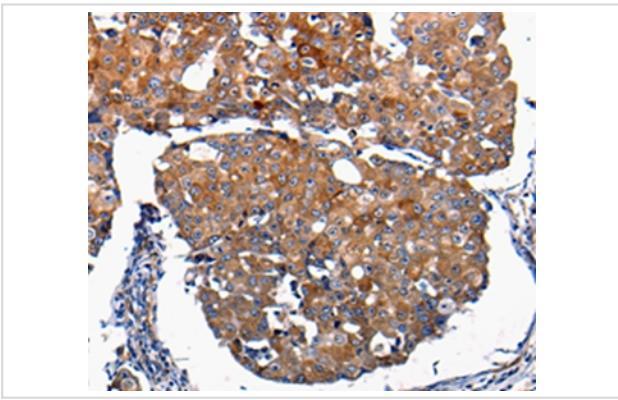
Western blotting: 1:1000-1:5000

Immunohistochemistry: 1:100-1:500

Images



Gel: 8%SDS-PAGE
Lysates (from left to right): Mouse lung tissue
Amount of lysate: 30ug per lane
Primary antibody: 1/1000 dilution
Secondary antibody dilution: 1/8000
Exposure time: 10 seconds



Immunohistochemical analysis of paraffin-embedded Human breast cancer tissue using #36769 at dilution 1/100.

Background

The protein encoded by this gene is a member of the fibroblast growth factor (FGF) family. FGF family members bind heparin and possess broad mitogenic and angiogenic activities. This protein has been implicated in diverse biological processes, such as limb and nervous system development, wound healing, and tumor growth. The mRNA for this gene contains multiple polyadenylation sites, and is alternatively translated from non-AUG (CUG) and AUG initiation codons, resulting in five different isoforms with distinct properties. The CUG-initiated isoforms are localized in the nucleus and are responsible for the intracrine effect, whereas, the AUG-initiated form is mostly cytosolic and is responsible for the paracrine and autocrine effects of this FGF.

Note: This product is for in vitro research use only