

## FGF3 Antibody

Catalog No: #36771

Orders: [order@signalwayantibody.com](mailto:order@signalwayantibody.com)Support: [tech@signalwayantibody.com](mailto:tech@signalwayantibody.com)

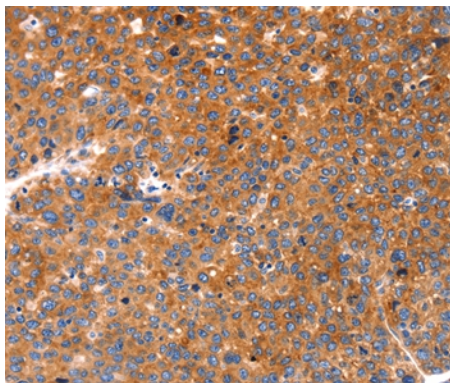
## Description

Product Name	FGF3 Antibody
Host Species	Rabbit
Clonality	Polyclonal
Purification	Antigen affinity purification.
Applications	IHC WB
Species Reactivity	Hu Rt
Specificity	The antibody detects endogenous levels of total FGF3 protein.
Immunogen Type	Peptide
Immunogen Description	Synthetic peptide corresponding to residues near the C terminal of human fibroblast growth factor 3
Target Name	FGF3
Other Names	INT2; HBGF-3
Accession No.	Swiss-Prot#: P11487NCBI Gene ID: 2248Gene Accssion: NP_005238
Uniprot	P11487
GeneID	2248;
Concentration	0.9mg/ml
Formulation	Rabbit IgG in pH7.4 PBS, 0.05% NaN <sub>3</sub> , 40% Glycerol.
Storage	Store at -20°C

## Application Details

Immunohistochemistry: 1:25-1:100

## Images



Immunohistochemical analysis of paraffin-embedded Human liver cancer tissue using #36771 at dilution 1/20.

## Background

The protein encoded by this gene is a member of the fibroblast growth factor (FGF) family. FGF family members possess broad mitogenic and cell survival activities and are involved in a variety of biological processes including embryonic development, cell growth, morphogenesis, tissue repair, tumor growth and invasion. This gene was identified by its similarity with mouse *fgf3/int-2*, a proto-oncogene activated in virally induced mammary tumors in the mouse. Frequent amplification of this gene has been found in human tumors, which may be important for neoplastic transformation and

tumor progression. Studies of the similar genes in mouse and chicken suggested the role in inner ear formation.

---

Note: This product is for in vitro research use only