

## CCL6 Antibody

Catalog No: #36780

Orders: [order@signalwayantibody.com](mailto:order@signalwayantibody.com)Support: [tech@signalwayantibody.com](mailto:tech@signalwayantibody.com)

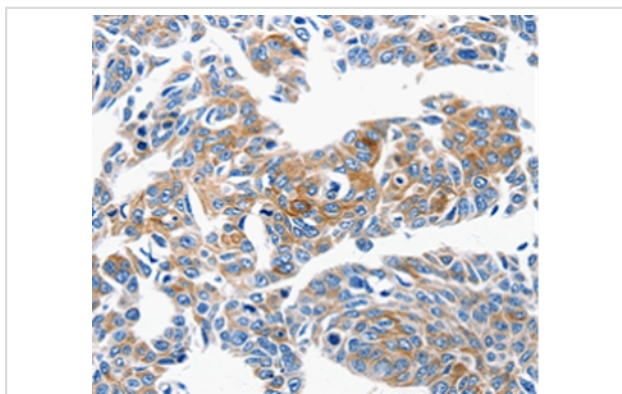
## Description

|                       |  |
|-----------------------|--|
| Product Name          | CCL6 Antibody  |
| Host Species          | Rabbit   |
| Clonality             | Polyclonal   |
| Purification          | Antigen affinity purification.   |
| Applications          | IHC  |
| Species Reactivity    | Hu Ms  |
| Specificity           | The antibody detects endogenous levels of total CCL6 protein.                                  |
| Immunogen Type        | Peptide  |
| Immunogen Description | Synthetic peptide corresponding to residues near the C terminal of human C-C motif chemokine 6 |
| Target Name           | CCL6   |
| Other Names           | C10; Scya6; MRP-1  |
| Accession No.         | Swiss-Prot#: P27784 NCBI Gene ID: 6368 Gene Accession: NP_033165                               |
| Uniprot               | P27784   |
| GeneID                | 6368;  |
| Concentration         | 2.8mg/ml   |
| Formulation           | Rabbit IgG in pH7.4 PBS, 0.05% NaN <sub>3</sub> , 40% Glycerol.                                |
| Storage               | Store at -20°C   |

## Application Details

Immunohistochemistry: 1:25-1:100

## Images



Immunohistochemical analysis of paraffin-embedded Human lung cancer tissue using #36780 at dilution 1/50.

## Background

In mice, CCL6 is expressed in cells from neutrophil and macrophage lineages, and can be greatly induced under conditions suitable for myeloid cell differentiation. It is highly expressed in bone marrow cultures that have been stimulated with the cytokine GM-CSF. Some low levels of gene expression also occur in certain cell lines of myeloid origin (e.g. the immature myeloid cell lines DA3 and 32D cl3, and the macrophage cell line P388D) that can also be greatly induced in culture with GM-CSF. However, in activated T cell lines, expression of CCL6 is greatly reduced. CCL6 can

also be induced in the mouse lung by the cytokine interleukin 13

---

Note: This product is for in vitro research use only