

## CDC37 Antibody

Catalog No: #36786

Orders: order@signalwayantibody.com

Support: tech@signalwayantibody.com

## Description

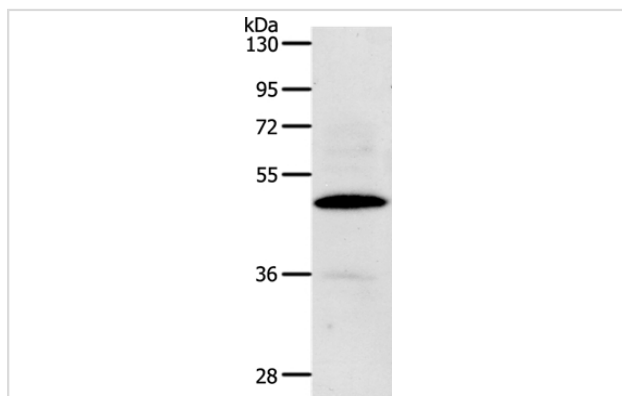
Product Name	CDC37 Antibody
Host Species	Rabbit
Clonality	Polyclonal
Purification	Antigen affinity purification.
Applications	WB IHC
Species Reactivity	Hu
Specificity	The antibody detects endogenous levels of total CDC37 protein.
Immunogen Type	Peptide
Immunogen Description	Synthetic peptide corresponding to a region derived from internal residues of human cell division cycle 37 homolog ( <i>S. cerevisiae</i> )
Target Name	CDC37
Other Names	P50CDC37
Accession No.	Swiss-Prot#: Q16543NCBI Gene ID: 11140Gene Accssion: NP_008996.1
Uniprot	Q16543
GeneID	11140;
SDS-PAGE MW	44kd
Concentration	0.7mg/ml
Formulation	Rabbit IgG in pH7.4 PBS, 0.05% NaN <sub>3</sub> , 40% Glycerol.
Storage	Store at -20°C

## Application Details

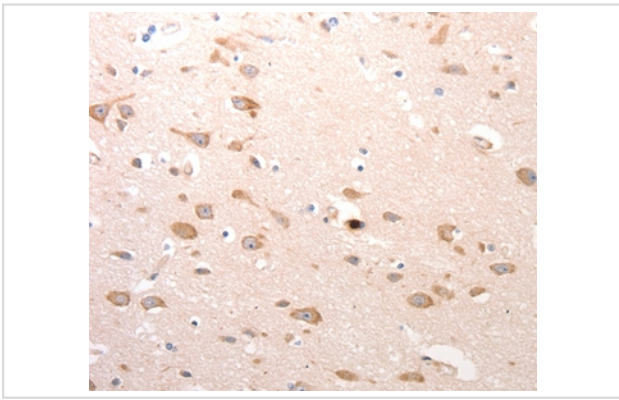
Western blotting: 1:200-1:1000

Immunohistochemistry: 1:15-1:50

## Images



Gel: 10%SDS-PAGE  
Lysate: 40ug Hela cell  
Primary antibody: 1/100 dilution  
Secondary antibody dilution: 1/8000  
Exposure time: 90 seconds



Immunohistochemical analysis of paraffin-embedded Human brain tissue using #36786 at dilution 1/20.

## Background

The protein encoded by this gene is highly similar to Cdc 37, a cell division cycle control protein of *Saccharomyces cerevisiae*. This protein is a molecular chaperone with specific function in cell signal transduction. It has been shown to form complex with Hsp90 and a variety of protein kinases including CDK4, CDK6, SRC, RAF-1, MOK, as well as eIF2 alpha kinases. It is thought to play a critical role in directing Hsp90 to its target kinases.

Note: This product is for in vitro research use only