

CDKN1C Antibody

Catalog No: #36788

Orders: order@signalwayantibody.comSupport: tech@signalwayantibody.com

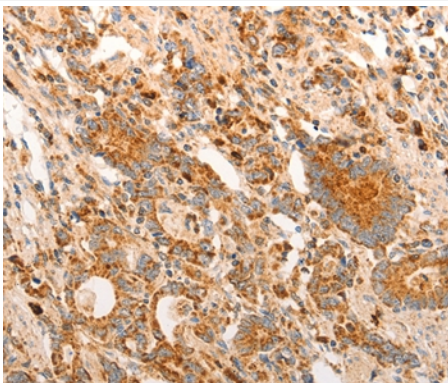
Description

Product Name	CDKN1C Antibody
Host Species	Rabbit
Clonality	Polyclonal
Purification	Antigen affinity purification.
Applications	IHC
Species Reactivity	Hu
Specificity	The antibody detects endogenous levels of total CDKN1C protein.
Immunogen Type	Peptide
Immunogen Description	Synthetic peptide corresponding to residues near the N terminal of human cyclin-dependent kinase inhibitor 1C (p57, Kip2)
Target Name	CDKN1C
Other Names	BWS; WBS; p57; BWCR; KIP2; IMAGE
Accession No.	Swiss-Prot#: P49918NCBI Gene ID: 1028Gene Accssion: NP_000067
Uniprot	P49918
GeneID	1028;
Concentration	0.6mg/ml
Formulation	Rabbit IgG in pH7.4 PBS, 0.05% NaN ₃ , 40% Glycerol.
Storage	Store at -20°C

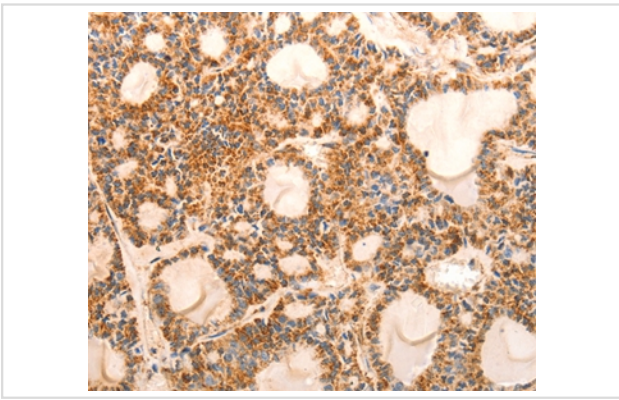
Application Details

Immunohistochemistry: 1:25-1:100

Images



Immunohistochemical analysis of paraffin-embedded Human gastric cancer tissue using #36788 at dilution 1/15.



Immunohistochemical analysis of paraffin-embedded Human thyroid cancer tissue using #36788 at dilution 1/15.

Background

This gene is imprinted, with preferential expression of the maternal allele. The encoded protein is a tight-binding, strong inhibitor of several G1 cyclin/Cdk complexes and a negative regulator of cell proliferation. Mutations in this gene are implicated in sporadic cancers and Beckwith-Wiedemann syndrome, suggesting that this gene is a tumor suppressor candidate. Three transcript variants encoding two different isoforms have been found for this gene.

Note: This product is for in vitro research use only