

CEBPD Antibody

Catalog No: #36790

Orders: order@signalwayantibody.comSupport: tech@signalwayantibody.com

Description

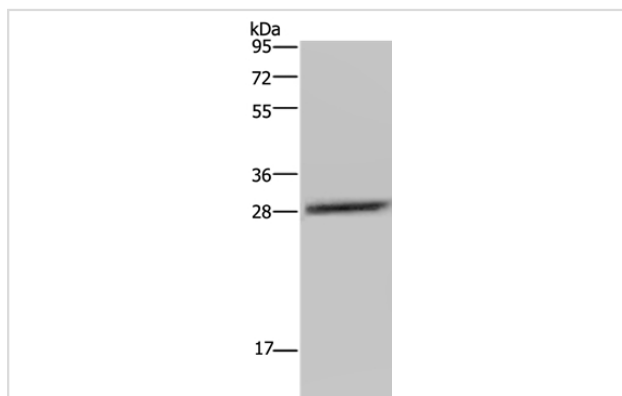
Product Name	CEBPD Antibody
Host Species	Rabbit
Clonality	Polyclonal
Purification	Antigen affinity purification.
Applications	WB IHC
Species Reactivity	Hu Ms Rt
Specificity	The antibody detects endogenous levels of total CEBPD protein.
Immunogen Type	Peptide
Immunogen Description	Synthetic peptide corresponding to a region derived from internal residues of human CCAAT/enhancer binding protein (C/EBP), delta
Target Name	CEBPD
Other Names	CELF; CRP3; C/EBP-delta; NF-IL6-beta
Accession No.	Swiss-Prot#: P49716NCBI Gene ID: 1052Gene Accssion: NP_005186
Uniprot	P49716
GeneID	1052;
SDS-PAGE MW	28kd
Concentration	2.3mg/ml
Formulation	Rabbit IgG in pH7.4 PBS, 0.05% NaN ₃ , 40% Glycerol.
Storage	Store at -20°C

Application Details

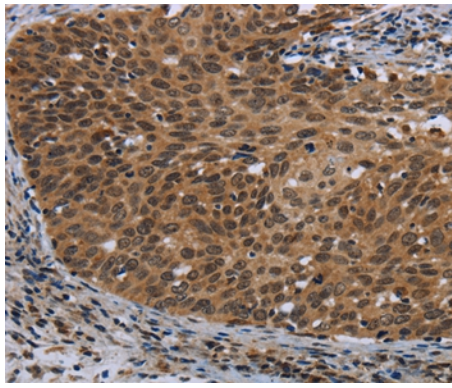
Western blotting: 1:200-1:1000

Immunohistochemistry: 1:50-1:200

Images



Gel: 10%SDS-PAGE
Lysate: 40ug LO2 cell
Primary antibody: 1/300 dilution
Secondary antibody dilution: 1/8000
Exposure time: 5 minutes



Immunohistochemical analysis of paraffin-embedded Human cervical cancer tissue using #36790 at dilution 1/40.

Background

The protein encoded by this intronless gene is a bZIP transcription factor which can bind as a homodimer to certain DNA regulatory regions. It can also form heterodimers with the related protein CEBP-alpha. The encoded protein is important in the regulation of genes involved in immune and inflammatory responses, and may be involved in the regulation of genes associated with activation and/or differentiation of macrophages. The cytogenetic location of this locus has been reported as both 8p11 and 8q11.

Note: This product is for in vitro research use only