

CFTR Antibody

Catalog No: #36791

Orders: order@signalwayantibody.comSupport: tech@signalwayantibody.com

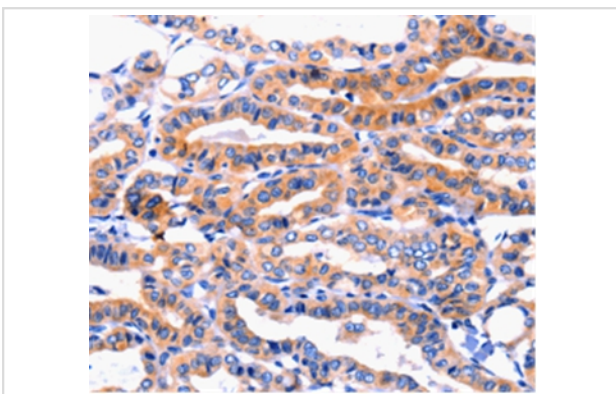
Description

Product Name	CFTR Antibody
Host Species	Rabbit
Clonality	Polyclonal
Purification	Antigen affinity purification.
Applications	IHC
Species Reactivity	Hu
Specificity	The antibody detects endogenous levels of total CFTR protein.
Immunogen Type	Peptide
Immunogen Description	Synthetic peptide corresponding to a region derived from internal residues of human Cystic fibrosis transmembrane conductance regulator
Target Name	CFTR
Other Names	CF; MRP7; ABC35; ABCC7; CFTR/MRP; TNR-CFTR; dJ760C5.1
Accession No.	Swiss-Prot#: P13569NCBI Gene ID: 1080Gene Accssion: NP_000483
Uniprot	P13569
GeneID	1080;
Concentration	0.4mg/ml
Formulation	Rabbit IgG in pH7.4 PBS, 0.05% NaN ₃ , 40% Glycerol.
Storage	Store at -20°C

Application Details

Immunohistochemistry: 1:10-1:50

Images



Immunohistochemical analysis of paraffin-embedded Human thyroid cancer tissue using #36791 at dilution 1/8.

Background

This gene encodes a member of the ATP-binding cassette (ABC) transporter superfamily. ABC proteins transport various molecules across extra- and intra-cellular membranes. ABC genes are divided into seven distinct subfamilies (ABC1, MDR/TAP, MRP, ALD, OABP, GCN20, White). This protein is

a member of the MRP subfamily that is involved in multi-drug resistance. The encoded protein functions as a chloride channel and controls the regulation of other transport pathways. Mutations in this gene are associated with the autosomal recessive disorders cystic fibrosis and congenital bilateral aplasia of the vas deferens. Alternatively spliced transcript variants have been described, many of which result from mutations in this gene.

Note: This product is for in vitro research use only