

KRT14 Antibody

Catalog No: #36794

Orders: order@signalwayantibody.com

Support: tech@signalwayantibody.com

Description

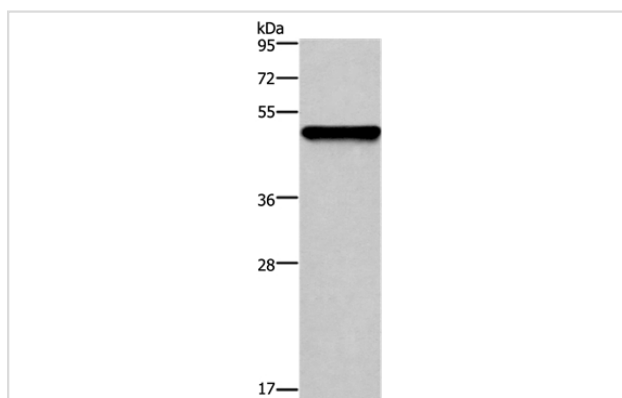
Product Name	KRT14 Antibody
Host Species	Rabbit
Clonality	Polyclonal
Purification	Antigen affinity purification.
Applications	WB IHC
Species Reactivity	Hu Ms Rt
Specificity	The antibody detects endogenous levels of total KRT14 protein.
Immunogen Type	Peptide
Immunogen Description	Synthetic peptide corresponding to residues near the C terminal of human Keratin, type I cytoskeletal 14
Target Name	KRT14
Other Names	K14; NFJ; CK14; EBS3; EBS4
Accession No.	Swiss-Prot#: P02533NCBI Gene ID: 3861Gene Accssion: NP_000517
Uniprot	P02533
GeneID	3861;
SDS-PAGE MW	52kd
Concentration	0.6mg/ml
Formulation	Rabbit IgG in pH7.4 PBS, 0.05% NaN ₃ , 40% Glycerol.
Storage	Store at -20°C

Application Details

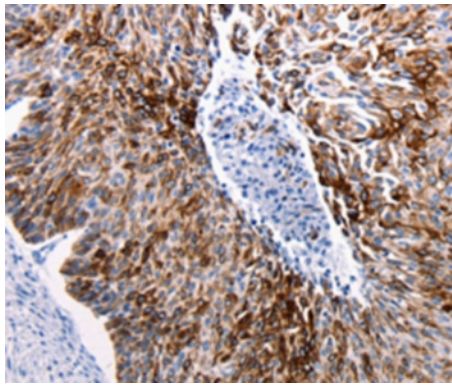
Western blotting: 1:200-1:1000

Immunohistochemistry: 1:25-1:100

Images



Gel: 10%SDS-PAGE
 Lysates (from left to right): Mouse thymus tissue
 Amount of lysate: 30ug per lane
 Primary antibody: 1/300 dilution
 Secondary antibody dilution: 1/8000
 Exposure time: 3 seconds



Immunohistochemical analysis of paraffin-embedded Human cervical cancer tissue using #36794 at dilution 1/25.

Background

This gene encodes a member of the keratin family, the most diverse group of intermediate filaments. This gene product, a type I keratin, is usually found as a heterotetramer with two keratin 5 molecules, a type II keratin. Together they form the cytoskeleton of epithelial cells. Mutations in the genes for these keratins are associated with epidermolysis bullosa simplex. At least one pseudogene has been identified at 17p12-p11.

Note: This product is for in vitro research use only