

CMTM1 Antibody

Catalog No: #36796

Orders: order@signalwayantibody.comSupport: tech@signalwayantibody.com

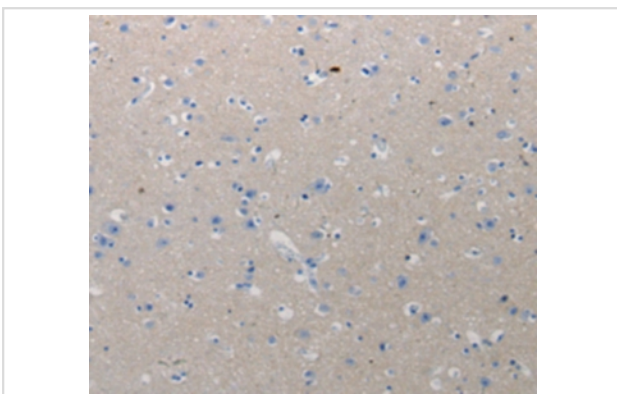
Description

Product Name	CMTM1 Antibody
Host Species	Rabbit
Clonality	Polyclonal
Purification	Antigen affinity purification.
Applications	IHC
Species Reactivity	Hu
Specificity	The antibody detects endogenous levels of total CMTM1 protein.
Immunogen Type	Peptide
Immunogen Description	Synthetic peptide corresponding to residues near the C terminal of human CKLF-like MARVEL transmembrane domain-containing protein 1
Target Name	CMTM1
Other Names	CKLFH; CKLFH1; CKLFSF1
Accession No.	Swiss-Prot#: Q8IZ96NCBI Gene ID: 113540Gene Accsson: NP_443725
Uniprot	Q8IZ96
GeneID	113540;
Concentration	0.3mg/ml
Formulation	Rabbit IgG in pH7.4 PBS, 0.05% NaN ₃ , 40% Glycerol.
Storage	Store at -20°C

Application Details

Immunohistochemistry: 1:10-1:100

Images



Immunohistochemical analysis of paraffin-embedded Human urinary bladder tissue using #36796 at dilution 1/10.

Background

This gene belongs to the chemokine-like factor gene superfamily, a novel family that is similar to the chemokine and the transmembrane 4 superfamilies of signaling molecules. The protein encoded by this gene may play an important role in testicular development. Alternatively spliced

transcript variants encoding different isoforms have been identified. Naturally occurring read-through transcription occurs between this locus and the neighboring locus CKLF (chemokine-like factor).

Note: This product is for in vitro research use only