

COX18 Antibody

Catalog No: #36801

Orders: order@signalwayantibody.comSupport: tech@signalwayantibody.com

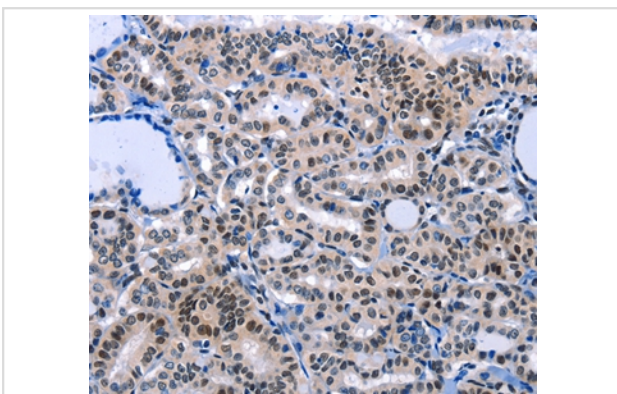
Description

Product Name	COX18 Antibody
Host Species	Rabbit
Clonality	Polyclonal
Purification	Antigen affinity purification.
Applications	IHC
Species Reactivity	Hu
Specificity	The antibody detects endogenous levels of total COX18 protein.
Immunogen Type	Peptide
Immunogen Description	Synthetic peptide corresponding to a region derived from internal residues of human cytochrome c oxidase assembly homolog 18 (yeast)
Target Name	COX18
Other Names	COX18HS
Accession No.	Swiss-Prot#: Q8N8Q8NCBI Gene ID: 285521Gene Accssion: NP_776188
Uniprot	Q8N8Q8
GeneID	285521;
Concentration	0.3mg/ml
Formulation	Rabbit IgG in pH7.4 PBS, 0.05% NaN ₃ , 40% Glycerol.
Storage	Store at -20°C

Application Details

Immunohistochemistry: 1:10-1:50

Images



Immunohistochemical analysis of paraffin-embedded Human thyroid cancer tissue using #36801 at dilution 1/7.

Background

COX18 encodes a cytochrome c oxidase (COX)-assembly protein. The *S. cerevisiae* Cox18 protein catalyzes the insertion of the Cox2 (MTCO2; MIM 516040) C-terminal tail into the mitochondrial inner membrane, an intermediate step in the assembly of complex IV of the mitochondrial respiratory

chain. Required for the insertion of integral membrane proteins into the mitochondrial inner membrane. Essential for the activity and assembly of cytochrome c oxidase. Plays a central role in the translocation and export of the C-terminal part of the COX2 protein into the mitochondrial intermembrane space.

Note: This product is for in vitro research use only