

CPT2 Antibody

Catalog No: #36802

Orders: order@signalwayantibody.comSupport: tech@signalwayantibody.com

Description

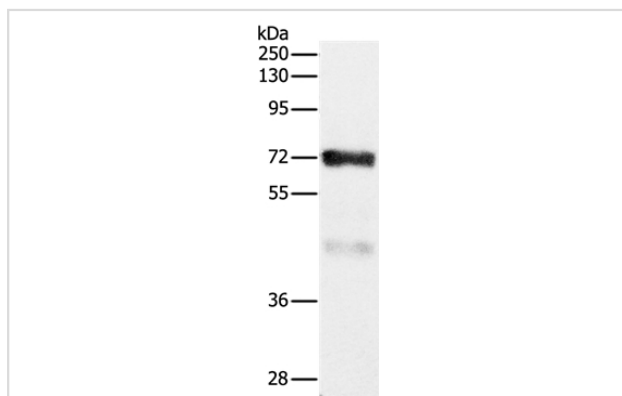
Product Name	CPT2 Antibody
Host Species	Rabbit
Clonality	Polyclonal
Purification	Antigen affinity purification.
Applications	WB IHC
Species Reactivity	Hu Ms Rt
Specificity	The antibody detects endogenous levels of total CPT2 protein.
Immunogen Type	Peptide
Immunogen Description	Synthetic peptide corresponding to a region derived from internal residues of human Carnitine palmitoyltransferase 2
Target Name	CPT2
Other Names	CPT1; IIAE4; CPTASE
Accession No.	Swiss-Prot#: P23786NCBI Gene ID: 1376Gene Accssion: NP_000089.1
Uniprot	P23786
GeneID	1376;
SDS-PAGE MW	74kd
Concentration	0.8mg/ml
Formulation	Rabbit IgG in pH7.4 PBS, 0.05% NaN ₃ , 40% Glycerol.
Storage	Store at -20°C

Application Details

Western blotting: 1:500-1:2000

Immunohistochemistry: 1:25-1:50

Images



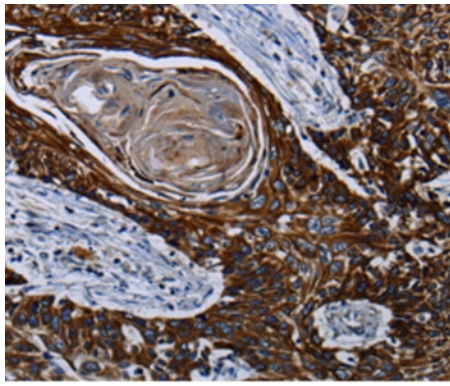
Gel: 10%SDS-PAGE

Lysates: 30ug Human fetal kidney tissue

Primary antibody: 1/500 dilution

Secondary antibody dilution: 1/8000

Exposure time: 20 seconds



Immunohistochemical analysis of paraffin-embedded Human esophagus cancer tissue using #36802 at dilution 1/10.

Background

The protein encoded by this gene is a nuclear protein which is transported to the mitochondrial inner membrane. Together with carnitine palmitoyltransferase I, the encoded protein oxidizes long-chain fatty acids in the mitochondria. Defects in this gene are associated with mitochondrial long-chain fatty-acid (LCFA) oxidation disorders.

Note: This product is for in vitro research use only