

COL4A1 Antibody

Catalog No: #36803

Orders: order@signalwayantibody.comSupport: tech@signalwayantibody.com

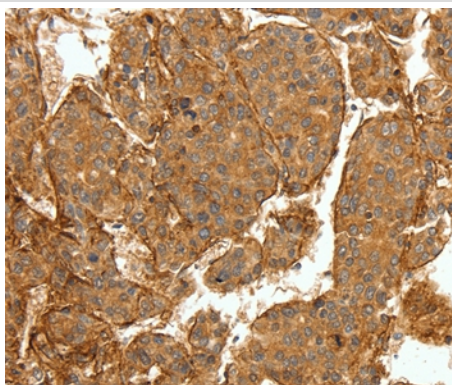
Description

Product Name	COL4A1 Antibody
Host Species	Rabbit
Clonality	Polyclonal
Purification	Antigen affinity purification.
Applications	IHC
Species Reactivity	Hu Ms
Specificity	The antibody detects endogenous levels of total COL4A1 protein.
Immunogen Type	Peptide
Immunogen Description	Synthetic peptide corresponding to residues near the C terminal of human collagen, type IV, alpha 1
Target Name	COL4A1
Other Names	ICH; HANAC; POREN1; arresten
Accession No.	Swiss-Prot#: P02462NCBI Gene ID: 1282Gene Accssion: NP_001836.2
Uniprot	P02462
GeneID	1282;
Concentration	1.1mg/ml
Formulation	Rabbit IgG in pH7.4 PBS, 0.05% NaN ₃ , 40% Glycerol.
Storage	Store at -20°C

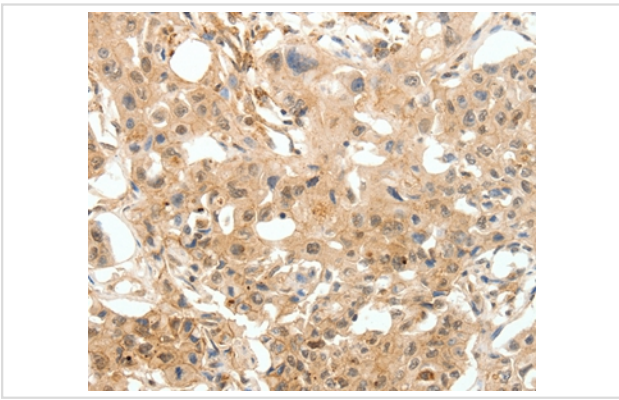
Application Details

Immunohistochemistry: 1:50-1:200

Images



Immunohistochemical analysis of paraffin-embedded Human lung cancer tissue using #36803 at dilution 1/30.



Immunohistochemical analysis of paraffin-embedded Human breast cancer tissue using #36803 at dilution 1/30.

Background

This gene encodes the major type IV alpha collagen chain of basement membranes. Like the other members of the type IV collagen gene family, this gene is organized in a head-to-head conformation with another type IV collagen gene so that each gene pair shares a common promoter.

Note: This product is for in vitro research use only