

CRH Antibody

Catalog No: #36806

Orders: order@signalwayantibody.comSupport: tech@signalwayantibody.com

Description

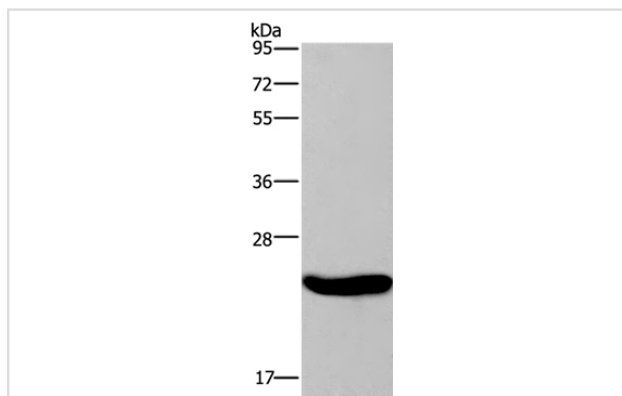
Product Name	CRH Antibody
Host Species	Rabbit
Clonality	Polyclonal
Purification	Antigen affinity purification.
Applications	IHC
Species Reactivity	Hu Ms Rt
Specificity	The antibody detects endogenous levels of total CRH protein.
Immunogen Type	Peptide
Immunogen Description	Synthetic peptide corresponding to residues near the C terminal of human corticotropin releasing hormone
Target Name	CRH
Other Names	CRF
Accession No.	Swiss-Prot#: P06850NCBI Gene ID: 1392Gene Accssion: NP_000747
Uniprot	P06850
GeneID	1392;
SDS-PAGE MW	21kd
Concentration	1mg/ml
Formulation	Rabbit IgG in pH7.4 PBS, 0.05% NaN ₃ , 40% Glycerol.
Storage	Store at -20°C

Application Details

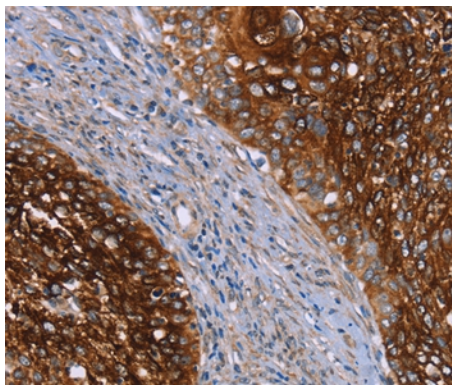
Western blotting: 1:200-1:1000

Immunohistochemistry: 1:25-1:100

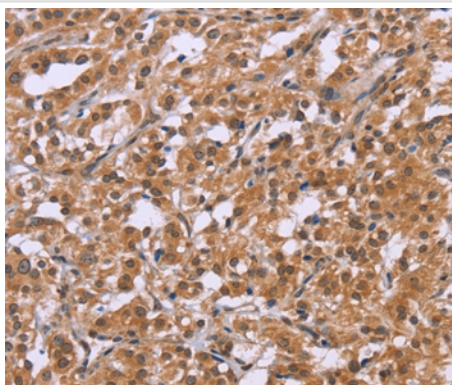
Images



Gel: 8%SDS-PAGE
Lysate: 40ug Human placenta tissue
Primary antibody: 1/200 dilution
Secondary antibody dilution: 1/8000
Exposure time: 10 seconds



Immunohistochemical analysis of paraffin-embedded Human cervical cancer tissue using #36806 at dilution 1/20.



Immunohistochemical analysis of paraffin-embedded Human thyroid cancer tissue using #36806 at dilution 1/20.

Background

Corticotropin-releasing hormone is secreted by the paraventricular nucleus (PVN) of the hypothalamus in response to stress. Marked reduction in this protein has been observed in association with Alzheimer disease and autosomal recessive hypothalamic corticotropin deficiency has multiple and potentially fatal metabolic consequences including hypoglycemia and hepatitis. In addition to production in the hypothalamus, this protein is also synthesized in peripheral tissues, such as T lymphocytes and is highly expressed in the placenta. In the placenta it is a marker that determines the length of gestation and the timing of parturition and delivery.

Note: This product is for in vitro research use only