

GJD2 Antibody

Catalog No: #36809

Orders: order@signalwayantibody.com

Support: tech@signalwayantibody.com

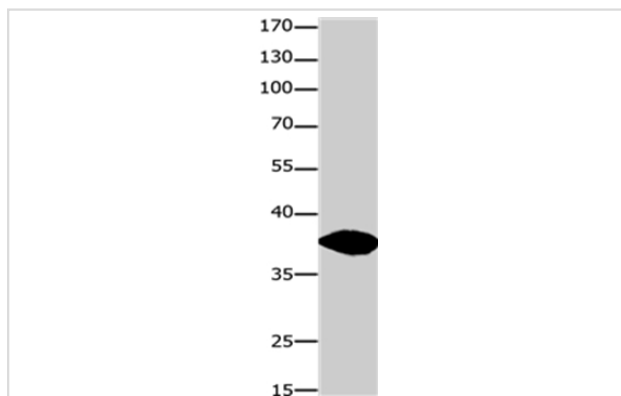
Description

Product Name	GJD2 Antibody
Host Species	Rabbit
Clonality	Polyclonal
Purification	Antigen affinity purification.
Applications	WB
Species Reactivity	Hu
Specificity	The antibody detects endogenous levels of total GJD2 protein.
Immunogen Type	Peptide
Immunogen Description	Synthetic peptide corresponding to a region derived from internal residues of human gap junction protein, delta 2, 36kDa
Target Name	GJD2
Other Names	CX36; GJA9
Accession No.	Swiss-Prot#: Q9UKL4NCBI Gene ID: 57369Gene Accssion: NP_065711
Uniprot	Q9UKL4
GeneID	57369;
SDS-PAGE MW	36kd
Concentration	2mg/ml
Formulation	Rabbit IgG in pH7.4 PBS, 0.05% NaN ₃ , 40% Glycerol.
Storage	Store at -20°C

Application Details

Western blotting: 1:200-1:1000

Images



Gel: 10%SDS-PAGE

Lysates (from left to right): Human fetal muscle and brain tissue

Amount of lysate: 30ug per lane

Primary antibody: 1/250 dilution

Secondary antibody dilution: 1/8000

Exposure time: 5 minutes

Background

This gene encodes a member of the connexin protein family. Connexins are gap junction proteins which are arranged in groups of 6 around a central

pore to form a connexon, a component of the gap junction intercellular channel. The channels formed by this protein allow cationic molecule exchange between human beta cells and may function in the regulation of insulin secretion.

Note: This product is for in vitro research use only