

## GJC2 Antibody

Catalog No: #36810

Orders: order@signalwayantibody.com

Support: tech@signalwayantibody.com

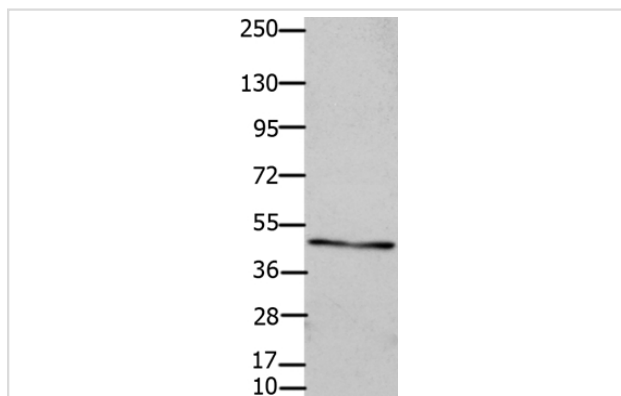
## Description

Product Name	GJC2 Antibody
Host Species	Rabbit
Clonality	Polyclonal
Purification	Antigen affinity purification.
Applications	WB
Species Reactivity	Hu Ms Rt
Specificity	The antibody detects endogenous levels of total GJC2 protein.
Immunogen Type	Peptide
Immunogen Description	Synthetic peptide corresponding to residues near the C terminal of human gap junction protein, gamma 2, 47kDa
Target Name	GJC2
Other Names	Cx47; HLD2; GJA12; SPG44; CX46.6; LMPH1C; PMLDAR
Accession No.	Swiss-Prot#: Q5T442NCBI Gene ID: 57165Gene Accssion: NP_065168
Uniprot	Q5T442
GeneID	57165;
SDS-PAGE MW	47kd
Concentration	2.1mg/ml
Formulation	Rabbit IgG in pH7.4 PBS, 0.05% NaN <sub>3</sub> , 40% Glycerol.
Storage	Store at -20°C

## Application Details

Western blotting: 1:500-1:2000

## Images



Gel: 10%SDS-PAGE  
 Lysate: 30ug OP9 cell  
 Primary antibody: 1/450 dilution  
 Secondary antibody dilution: 1/8000  
 Exposure time: 30 seconds

## Background

This gene encodes a gap junction protein. Gap junction proteins are members of a large family of homologous connexins and comprise 4

transmembrane, 2 extracellular, and 3 cytoplasmic domains. This gene plays a key role in central myelination and is involved in peripheral myelination in humans. Defects in this gene are the cause of autosomal recessive Pelizaeus-Merzbacher-like disease-1.

---

Note: This product is for in vitro research use only