

Gjc3 Antibody

Catalog No: #36811

Orders: order@signalwayantibody.comSupport: tech@signalwayantibody.com

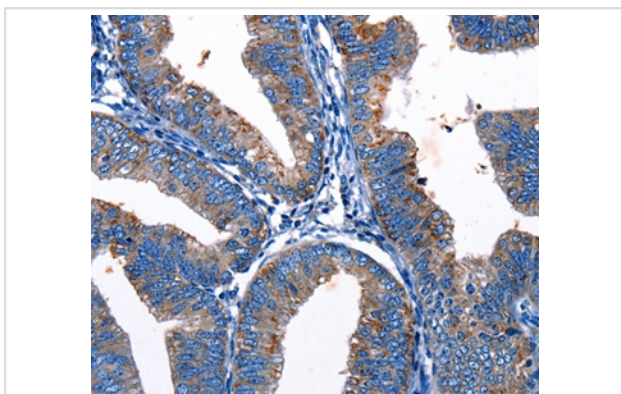
Description

Product Name	Gjc3 Antibody
Host Species	Rabbit
Clonality	Polyclonal
Purification	Antigen affinity purification.
Applications	IHC
Species Reactivity	Hu Ms
Specificity	The antibody detects endogenous levels of total Gjc3 protein.
Immunogen Type	Peptide
Immunogen Description	Synthetic peptide corresponding to a region derived from internal residues of human gap junction protein, gamma 3
Target Name	Gjc3
Other Names	Cx29; Gje1
Accession No.	Swiss-Prot#: Q921C1NCBI Gene ID: 118446Gene Accssion: NP_536698
Uniprot	Q921C1
GeneID	118446;
Concentration	0.5mg/ml
Formulation	Rabbit IgG in pH7.4 PBS, 0.05% NaN3, 40% Glycerol.
Storage	Store at -20°C

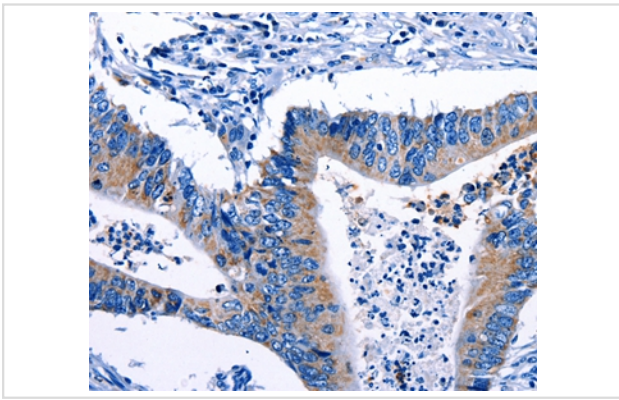
Application Details

Immunohistochemistry: 1:10-1:50

Images



Immunohistochemical analysis of paraffin-embedded Human cervical cancer tissue using #36811 at dilution 1/10.



Immunohistochemical analysis of paraffin-embedded Human colon cancer tissue using #36811 at dilution 1/10.

Background

Gap junction gamma-3, also known as connexin-30.2 (Cx30.2) or connexin-31.3 (Cx31.3) or gap junction epsilon-1 (GJE1), is a protein that in humans is encoded by the GJC3 gene. GJC3 is a connexin. This gene encodes a gap junction protein. The encoded protein, also known as a connexin, plays a role in formation of gap junctions, which provide direct connections between neighboring cells. Mutations in this gene have been reported to be associated with nonsyndromic hearing loss.

Note: This product is for in vitro research use only