

## CX3CR1 Antibody

Catalog No: #36817

Orders: order@signalwayantibody.com

Support: tech@signalwayantibody.com

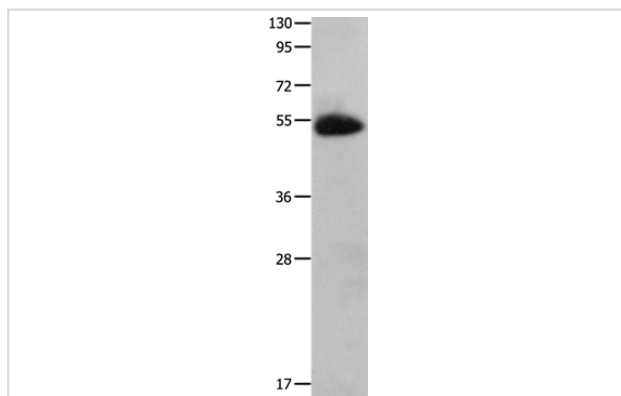
## Description

Product Name	CX3CR1 Antibody
Host Species	Rabbit
Clonality	Polyclonal
Purification	Antigen affinity purification.
Applications	WB
Species Reactivity	Hu
Specificity	The antibody detects endogenous levels of total CX3CR1 protein.
Immunogen Type	Peptide
Immunogen Description	Synthetic peptide corresponding to residues near the N terminal of human chemokine (C-X3-C motif) receptor 1
Target Name	CX3CR1
Other Names	V28; CCRL1; GPR13; CMKDR1; GPRV28; CMKBRL1
Accession No.	Swiss-Prot#: P49238NCBI Gene ID: 1524Gene Accssion: NP_001328
Uniprot	P49238
GeneID	1524;
SDS-PAGE MW	44kd
Concentration	0.4mg/ml
Formulation	Rabbit IgG in pH7.4 PBS, 0.05% NaN <sub>3</sub> , 40% Glycerol.
Storage	Store at -20°C

## Application Details

Western blotting: 1:500-1:2000

## Images



Gel: 10%SDS-PAGE  
 Lysates (from left to right): Human fetal muscle tissue  
 Amount of lysate: 60ug per lane  
 Primary antibody: 1/200 dilution  
 Secondary antibody dilution: 1/8000  
 Exposure time: 1 minute

## Background

Fractalkine is a transmembrane protein and chemokine involved in the adhesion and migration of leukocytes. The protein encoded by this gene is a

receptor for fractalkine. The encoded protein also is a coreceptor for HIV-1, and some variations in this gene lead to increased susceptibility to HIV-1 infection and rapid progression to AIDS. Four transcript variants encoding two different isoforms have been found for this gene.

---

Note: This product is for in vitro research use only