

CCNE2 Antibody

Catalog No: #36821

Orders: order@signalwayantibody.comSupport: tech@signalwayantibody.com

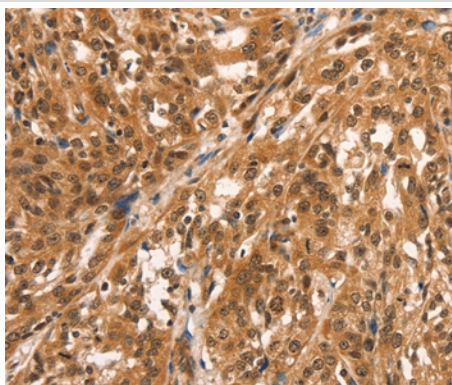
Description

Product Name	CCNE2 Antibody
Host Species	Rabbit
Clonality	Polyclonal
Purification	Antigen affinity purification.
Applications	IHC
Species Reactivity	Hu
Specificity	The antibody detects endogenous levels of total CCNE2 protein.
Immunogen Type	Peptide
Immunogen Description	Synthetic peptide corresponding to a region derived from internal residues of human cyclin E2
Target Name	CCNE2
Other Names	CYCE2
Accession No.	Swiss-Prot#: O96020NCBI Gene ID: 9134Gene Accssion: NP_477097
Uniprot	O96020
GeneID	9134;
Concentration	2.4mg/ml
Formulation	Rabbit IgG in pH7.4 PBS, 0.05% NaN ₃ , 40% Glycerol.
Storage	Store at -20°C

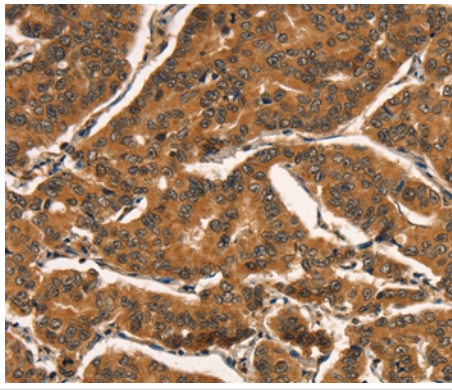
Application Details

Immunohistochemistry: 1:50-1:200

Images



Immunohistochemical analysis of paraffin-embedded Human esophagus cancer tissue using #36821 at dilution 1/25.



Immunohistochemical analysis of paraffin-embedded Human breast cancer tissue using #36821 at dilution 1/25.

Background

The protein encoded by this gene belongs to the highly conserved cyclin family, whose members are characterized by a dramatic periodicity in protein abundance through the cell cycle. Cyclins function as regulators of CDK kinases. Different cyclins exhibit distinct expression and degradation patterns which contribute to the temporal coordination of each mitotic event. This cyclin forms a complex with and functions as a regulatory subunit of CDK2. This cyclin has been shown to specifically interact with CIP/KIP family of CDK inhibitors, and plays a role in cell cycle G1/S transition.

Note: This product is for in vitro research use only