

SLC6A3 Antibody

Catalog No: #36823

Orders: order@signalwayantibody.comSupport: tech@signalwayantibody.com

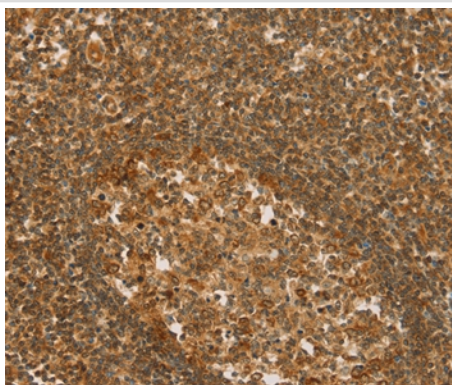
Description

Product Name	SLC6A3 Antibody
Host Species	Rabbit
Clonality	Polyclonal
Purification	Antigen affinity purification.
Applications	IHC
Species Reactivity	Hu
Specificity	The antibody detects endogenous levels of total SLC6A3 protein.
Immunogen Type	Peptide
Immunogen Description	Synthetic peptide corresponding to residues near the N terminal of human solute carrier family 6 (neurotransmitter transporter), member 3
Target Name	SLC6A3
Other Names	DAT; DAT1; PKDYS
Accession No.	Swiss-Prot#: Q01959NCBI Gene ID: 6531Gene Accssion: NP_001035
Uniprot	Q01959
GeneID	6531;
Concentration	3mg/ml
Formulation	Rabbit IgG in pH7.4 PBS, 0.05% NaN ₃ , 40% Glycerol.
Storage	Store at -20°C

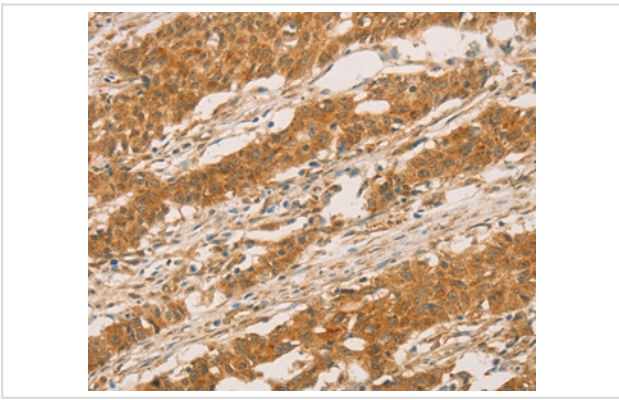
Application Details

Immunohistochemistry: 1:100-1:300

Images



Immunohistochemical analysis of paraffin-embedded Human gastric cancer tissue using #36823 at dilution 1/50.



Immunohistochemical analysis of paraffin-embedded Human tonsil tissue using #36823 at dilution 1/50.

Background

This gene encodes a dopamine transporter which is a member of the sodium- and chloride-dependent neurotransmitter transporter family. The 3' UTR of this gene contains a 40 bp tandem repeat, referred to as a variable number tandem repeat or VNTR, which can be present in 3 to 11 copies. Variation in the number of repeats is associated with idiopathic epilepsy, attention-deficit hyperactivity disorder, dependence on alcohol and cocaine, susceptibility to Parkinson disease and protection against nicotine dependence.

Note: This product is for in vitro research use only