

NDUFA12 Antibody

Catalog No: #36824

Orders: order@signalwayantibody.comSupport: tech@signalwayantibody.com

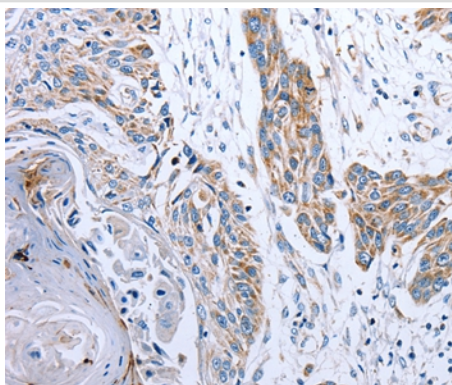
Description

Product Name	NDUFA12 Antibody
Host Species	Rabbit
Clonality	Polyclonal
Purification	Antigen affinity purification.
Applications	IHC
Species Reactivity	Hu
Specificity	The antibody detects endogenous levels of total NDUFA12 protein.
Immunogen Type	Peptide
Immunogen Description	Synthetic peptide corresponding to a region derived from internal residues of human NADH dehydrogenase (ubiquinone) 1 alpha subcomplex, 12
Target Name	NDUFA12
Other Names	B17.2; DAP13
Accession No.	Swiss-Prot#: Q9UI09NCBI Gene ID: 55967Gene Accssion: NP_061326
Uniprot	Q9UI09
GeneID	55967;
Concentration	2.2mg/ml
Formulation	Rabbit IgG in pH7.4 PBS, 0.05% NaN ₃ , 40% Glycerol.
Storage	Store at -20°C

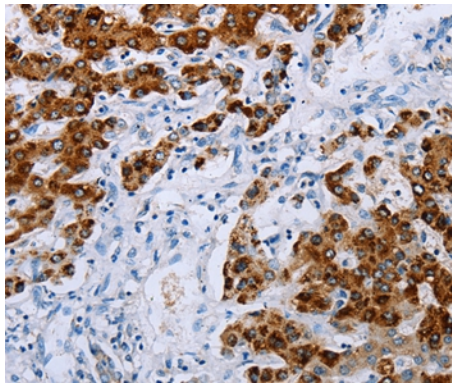
Application Details

Immunohistochemistry: 1:50-1:200

Images



Immunohistochemical analysis of paraffin-embedded Human liver cancer tissue using #36824 at dilution 1/50.



Immunohistochemical analysis of paraffin-embedded Human esophagus cancer tissue using #36824 at dilution 1/50.

Background

This gene encodes a protein which is part of mitochondrial complex 1, part of the oxidative phosphorylation system in mitochondria. Complex 1 transfers electrons to ubiquinone from NADH which establishes a proton gradient for the generation of ATP. Mutations in this gene are associated with Leigh syndrome due to mitochondrial complex 1 deficiency. Pseudogenes of this gene are located on chromosomes 5 and 13. Alternative splicing results in multiple transcript variants.

Note: This product is for in vitro research use only