

DXT1 Antibody

Catalog No: #36825

Orders: order@signalwayantibody.comSupport: tech@signalwayantibody.com

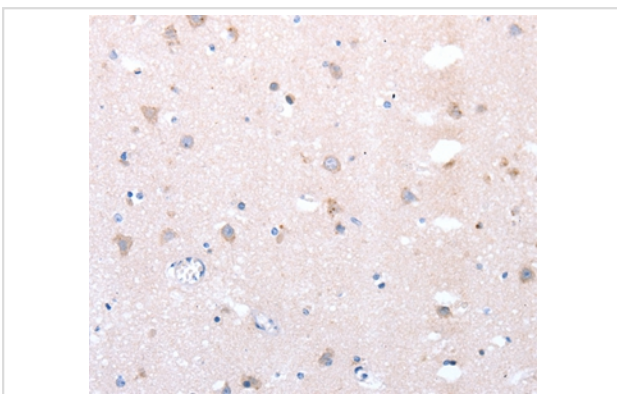
Description

Product Name	DXT1 Antibody
Host Species	Rabbit
Clonality	Polyclonal
Purification	Antigen affinity purification.
Applications	IHC
Species Reactivity	Hu Ms
Specificity	The antibody detects endogenous levels of total DXT1 protein.
Immunogen Type	Peptide
Immunogen Description	Synthetic peptide corresponding to a region derived from internal residues of human deltex homolog 1 (Drosophila)
Target Name	DXT1
Other Names	hDx-1
Accession No.	Swiss-Prot#: Q86Y01 NCBI Gene ID: 1840Gene Accssion: NP_004407
Uniprot	Q86Y01
GeneID	1840;
Concentration	0.9mg/ml
Formulation	Rabbit IgG in pH7.4 PBS, 0.05% NaN ₃ , 40% Glycerol.
Storage	Store at -20°C

Application Details

Immunohistochemistry: 1:25-1:100

Images



Immunohistochemical analysis of paraffin-embedded Human brain tissue using #36825 at dilution 1/20.

Background

Protein deltex-1 is a protein that in humans is encoded by the DTX1 gene. Studies in Drosophila have identified this gene as encoding a positive regulator of the Notch-signaling pathway. The human gene encodes a protein of unknown function; however, it may play a role in basic helix-loop-helix

transcription factor activity. DTX1 has been shown to interact with EP300. Functions as an ubiquitin ligase protein in vivo, mediating ubiquitination and promoting degradation of MEKK1, suggesting that it may regulate the Notch pathway via some ubiquitin ligase activity.

Note: This product is for in vitro research use only