

DUT Antibody

Catalog No: #36828

Orders: order@signalwayantibody.comSupport: tech@signalwayantibody.com

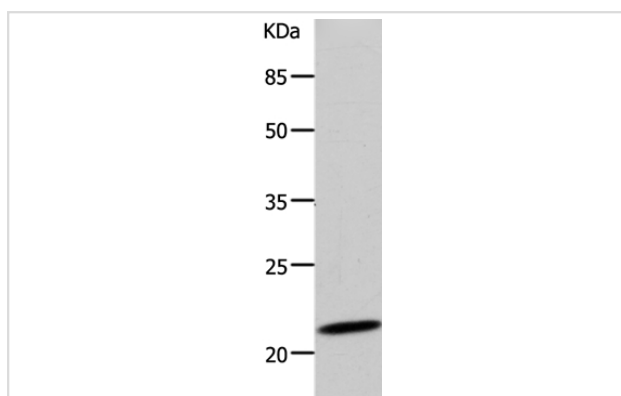
Description

Product Name	DUT Antibody
Host Species	Rabbit
Clonality	Polyclonal
Purification	Antigen affinity purification.
Applications	WB
Species Reactivity	Hu
Specificity	The antibody detects endogenous levels of total DUT protein.
Immunogen Type	Peptide
Immunogen Description	Synthetic peptide corresponding to residues near the C terminal of human Deoxyuridine triphosphatase
Target Name	DUT
Other Names	dUTPase
Accession No.	Swiss-Prot#: P33316NCBI Gene ID: 1854Gene Accssion: NP_001939
Uniprot	P33316
GeneID	1854;
SDS-PAGE MW	27kd
Concentration	1mg/ml
Formulation	Rabbit IgG in pH7.4 PBS, 0.05% NaN ₃ , 40% Glycerol.
Storage	Store at -20°C

Application Details

Western blotting: 1:200-1:1000

Images



Gel: 10%SDS-PAGE
Lysate: 40ug 293T cell
Primary antibody: 1/500 dilution
Secondary antibody dilution: 1/8000
Exposure time: 5 minutes

Background

This gene encodes an essential enzyme of nucleotide metabolism. The encoded protein forms a ubiquitous, homotetrameric enzyme that hydrolyzes dUTP to dUMP and pyrophosphate. This reaction serves two cellular purposes: providing a precursor (dUMP) for the synthesis of thymine nucleotides

needed for DNA replication, and limiting intracellular pools of dUTP. Elevated levels of dUTP lead to increased incorporation of uracil into DNA, which induces extensive excision repair mediated by uracil glycosylase. This repair process, resulting in the removal and reincorporation of dUTP, is self-defeating and leads to DNA fragmentation and cell death. Alternative splicing of this gene leads to different isoforms that localize to either the mitochondrion or nucleus. A related pseudogene is located on chromosome 19.

Note: This product is for in vitro research use only