

DVL2 Antibody

Catalog No: #36830

Orders: order@signalwayantibody.comSupport: tech@signalwayantibody.com

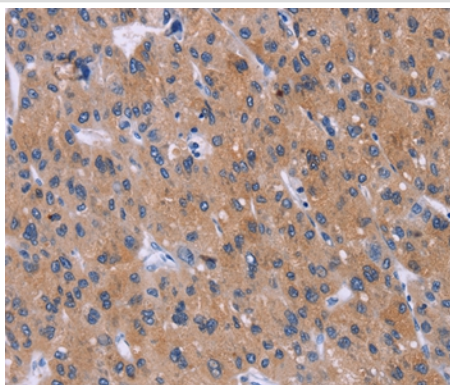
Description

Product Name	DVL2 Antibody
Host Species	Rabbit
Clonality	Polyclonal
Purification	Antigen affinity purification.
Applications	IHC
Species Reactivity	Hu Ms
Specificity	The antibody detects endogenous levels of total DVL2 protein.
Immunogen Type	Peptide
Immunogen Description	Synthetic peptide corresponding to a region derived from internal residues of human dishevelled segment polarity protein 2
Target Name	DVL2
Other Names	Dishevelled-2; DSH homolog 2; DVL2;
Accession No.	Swiss-Prot#: O14641NCBI Gene ID: 1856Gene Accssion: NP_004413
Uniprot	O14641
GeneID	1856;
Concentration	2.1mg/ml
Formulation	Rabbit IgG in pH7.4 PBS, 0.05% NaN ₃ , 40% Glycerol.
Storage	Store at -20°C

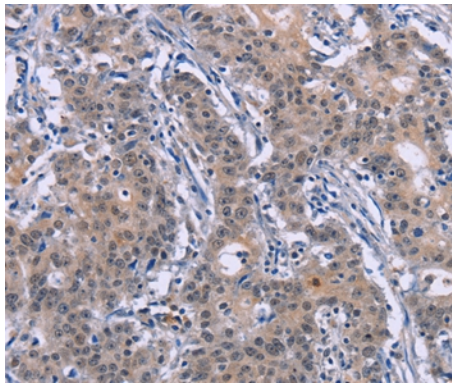
Application Details

Immunohistochemistry: 1:25-1:100

Images



Immunohistochemical analysis of paraffin-embedded Human liver cancer tissue using #36830 at dilution 1/20.



Immunohistochemical analysis of paraffin-embedded Human gastric cancer tissue using #36830 at dilution 1/20.

Background

This gene encodes a member of the dishevelled (dsh) protein family. The vertebrate dsh proteins have approximately 40% amino acid sequence similarity with *Drosophila* dsh. This gene encodes a 90-kD protein that undergoes posttranslational phosphorylation to form a 95-kD cytoplasmic protein, which may play a role in the signal transduction pathway mediated by multiple Wnt proteins. The mechanisms of dishevelled function in Wnt signaling are likely to be conserved among metazoans.

Note: This product is for in vitro research use only