

E2F7 Antibody

Catalog No: #36831

Orders: order@signalwayantibody.comSupport: tech@signalwayantibody.com

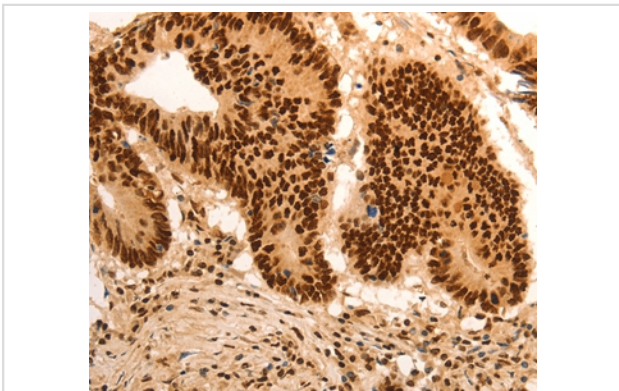
Description

Product Name	E2F7 Antibody
Host Species	Rabbit
Clonality	Polyclonal
Purification	Antigen affinity purification.
Applications	IHC
Species Reactivity	Hu
Specificity	The antibody detects endogenous levels of total E2F7 protein.
Immunogen Type	Peptide
Immunogen Description	Synthetic peptide corresponding to a region derived from internal residues of human E2F transcription factor 7
Target Name	E2F7
Other Names	no
Accession No.	Swiss-Prot#: Q96AV8NCBI Gene ID: 144455Gene Accssion: NP_976328
Uniprot	Q96AV8
GeneID	144455;
Concentration	0.5mg/ml
Formulation	Rabbit IgG in pH7.4 PBS, 0.05% NaN ₃ , 40% Glycerol.
Storage	Store at -20°C

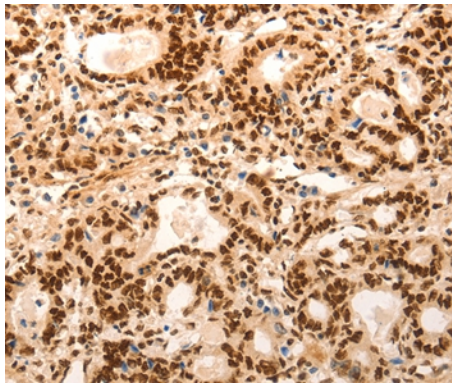
Application Details

Immunohistochemistry: 1:50-1:200

Images



Immunohistochemical analysis of paraffin-embedded Human gastric cancer tissue using #36831 at dilution 1/60.



Immunohistochemical analysis of paraffin-embedded Human colon cancer tissue using #36831 at dilution 1/60.

Background

Atypical E2F transcription factor that participates to various processes such as angiogenesis, polyploidization of specialized cells and DNA damage response. It plays a key role in polyploidization of cells in placenta and liver by regulating the endocycle, probably by repressing genes promoting cytokinesis and antagonizing action of classical E2F proteins (E2F1, E2F2 and/or E2F3).

Note: This product is for in vitro research use only