

EDNRA Antibody

Catalog No: #36835

Orders: order@signalwayantibody.comSupport: tech@signalwayantibody.com

Description

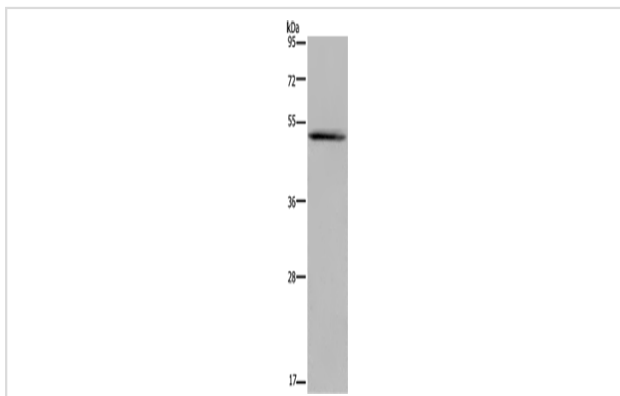
Product Name	EDNRA Antibody
Host Species	Rabbit
Clonality	Polyclonal
Purification	Antigen affinity purification.
Applications	WB IHC
Species Reactivity	Hu
Specificity	The antibody detects endogenous levels of total EDNRA protein.
Immunogen Type	Peptide
Immunogen Description	Synthetic peptide corresponding to a region derived from internal residues of human endothelin receptor type A
Target Name	EDNRA
Other Names	ETA; ET-A; ETAR; ETRA; ETA-R; hET-AR
Accession No.	Swiss-Prot#: P25101NCBI Gene ID: 1909Gene Accssion: NP_001948
Uniprot	P25101
GeneID	1909;
SDS-PAGE MW	49kd
Concentration	1.6mg/ml
Formulation	Rabbit IgG in pH7.4 PBS, 0.05% NaN ₃ , 40% Glycerol.
Storage	Store at -20°C

Application Details

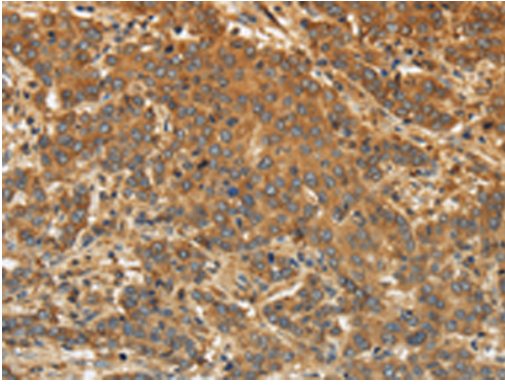
Western blotting: 1:200-1:1000

Immunohistochemistry: 1:50-1:200

Images



Gel: 8%SDS-PAGE
 Lysate: 40ug MCF-7 cell
 Primary antibody: 1/200 dilution
 Secondary antibody dilution: 1/8000
 Exposure time: 5 minutes



Immunohistochemical analysis of paraffin-embedded Human liver cancer tissue using #36835 at dilution 1/30.

Background

This gene encodes the receptor for endothelin-1, a peptide that plays a role in potent and long-lasting vasoconstriction. This receptor associates with guanine-nucleotide-binding (G) proteins, and this coupling activates a phosphatidylinositol-calcium second messenger system. Polymorphisms in this gene have been linked to migraine headache resistance. Alternative splicing results in multiple transcript variants.?

Note: This product is for in vitro research use only