

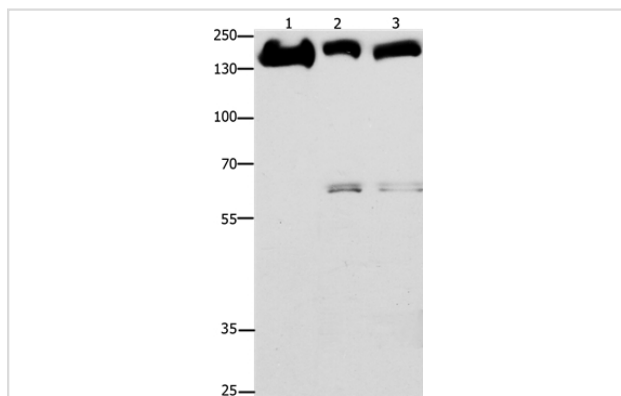
## Description

Product Name	EGFR Antibody
Host Species	Rabbit
Clonality	Polyclonal
Purification	Antigen affinity purification.
Applications	WB
Species Reactivity	Hu Ms
Specificity	The antibody detects endogenous levels of total EGFR protein.
Immunogen Type	Peptide
Immunogen Description	Synthetic peptide corresponding to a region derived from internal residues of human epidermal growth factor receptor
Target Name	EGFR
Other Names	ERBB; HER1; mENA; ERBB1; PIG61
Accession No.	Swiss-Prot#: P00533NCBI Gene ID: 1956Gene Accssion: NP_005219
Uniprot	P00533
GeneID	1956;
SDS-PAGE MW	134kd
Concentration	0.2mg/ml
Formulation	Rabbit IgG in pH7.4 PBS, 0.05% NaN <sub>3</sub> , 40% Glycerol.
Storage	Store at -20°C

## Application Details

Western blotting: 1:200-1:1000

## Images



Gel: 8%SDS-PAGE

Lysates (from left to right): Mouse liver tissue, Hela and A549 cell

Amount of lysate: 40ug per lane

Primary antibody: 1/100 dilution

Secondary antibody dilution: 1/8000

Exposure time: 30 seconds

## Background

The protein encoded by this gene is a transmembrane glycoprotein that is a member of the protein kinase superfamily. This protein is a receptor for

members of the epidermal growth factor family. EGFR is a cell surface protein that binds to epidermal growth factor. Binding of the protein to a ligand induces receptor dimerization and tyrosine autophosphorylation and leads to cell proliferation. Mutations in this gene are associated with lung cancer. Multiple alternatively spliced transcript variants that encode different protein isoforms have been found for this gene.

---

Note: This product is for in vitro research use only