

## SFRP5 Antibody

Catalog No: #36839

Orders: [order@signalwayantibody.com](mailto:order@signalwayantibody.com)Support: [tech@signalwayantibody.com](mailto:tech@signalwayantibody.com)

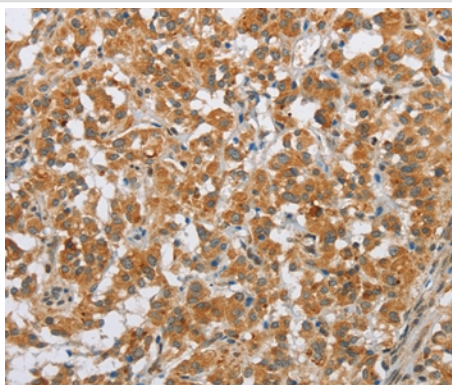
## Description

|                       |   |
|-----------------------|---|
| Product Name          | SFRP5 Antibody  |
| Host Species          | Rabbit  |
| Clonality             | Polyclonal  |
| Purification          | Antigen affinity purification.  |
| Applications          | IHC   |
| Species Reactivity    | Hu  |
| Specificity           | The antibody detects endogenous levels of total SFRP5 protein.  |
| Immunogen Type        | Peptide   |
| Immunogen Description | Synthetic peptide corresponding to a region derived from internal residues of human secreted frizzled-related protein 5 |
| Target Name           | SFRP5   |
| Other Names           | SARP3   |
| Accession No.         | Swiss-Prot#: Q5T4F7NCBI Gene ID: 6425Gene Accssion: NP_003006   |
| Uniprot               | Q5T4F7  |
| GeneID                | 6425;   |
| Concentration         | 2.2mg/ml  |
| Formulation           | Rabbit IgG in pH7.4 PBS, 0.05% NaN <sub>3</sub> , 40% Glycerol.   |
| Storage               | Store at -20°C  |

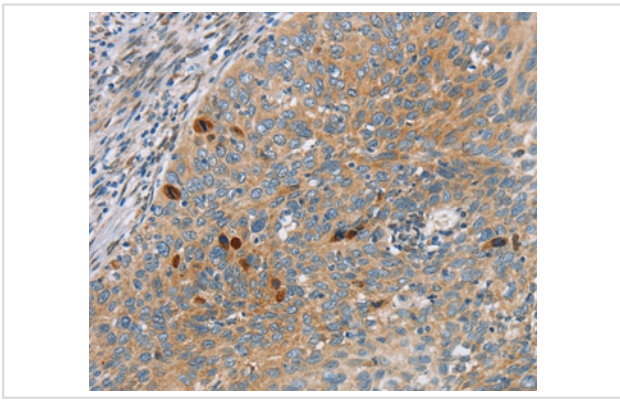
## Application Details

Immunohistochemistry: 1:25-1:100

## Images



Immunohistochemical analysis of paraffin-embedded Human thyroid cancer tissue using #36839 at dilution 1/20.



Immunohistochemical analysis of paraffin-embedded Human cervical cancer tissue using #36839 at dilution 1/20.

## Background

Secreted frizzled-related protein 5 (SFRP5) is a member of the SFRP family that contains a cysteine-rich domain homologous to the putative Wnt-binding site of Frizzled proteins. SFRPs act as soluble modulators of Wnt signaling. SFRP5 and SFRP1 may be involved in determining the polarity of photoreceptor cells in the retina. SFRP5 is highly expressed in the retinal pigment epithelium, and moderately expressed in the pancreas.

Note: This product is for in vitro research use only