

## ENPP3 Antibody

Catalog No: #36841

Orders: [order@signalwayantibody.com](mailto:order@signalwayantibody.com)Support: [tech@signalwayantibody.com](mailto:tech@signalwayantibody.com)

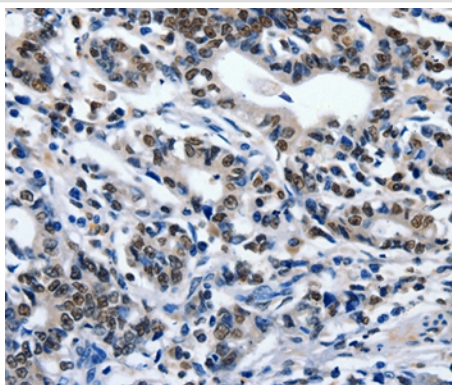
## Description

Product Name	ENPP3 Antibody
Host Species	Rabbit
Clonality	Polyclonal
Purification	Antigen affinity purification.
Applications	IHC
Species Reactivity	Hu
Specificity	The antibody detects endogenous levels of total ENPP3 protein.
Immunogen Type	Peptide
Immunogen Description	Synthetic peptide corresponding to a region derived from internal residues of human ectonucleotide pyrophosphatase/phosphodiesterase 3
Target Name	ENPP3
Other Names	B10; NPP3; PDNP3; CD203c; PD-IBETA
Accession No.	Swiss-Prot#: O14638NCBI Gene ID: 5169Gene Accssion: NP_005012
Uniprot	O14638
GeneID	5169;
Concentration	1.9mg/ml
Formulation	Rabbit IgG in pH7.4 PBS, 0.05% NaN <sub>3</sub> , 40% Glycerol.
Storage	Store at -20°C

## Application Details

Immunohistochemistry: 1:50-1:200

## Images



Immunohistochemical analysis of paraffin-embedded Human gastric cancer tissue using #36841 at dilution 1/80.

## Background

The protein encoded by this gene belongs to a series of ectoenzymes that are involved in hydrolysis of extracellular nucleotides. These ectoenzymes possess ATPase and ATP pyrophosphatase activities and are type II transmembrane proteins. Expression of the related rat mRNA has been found in

a subset of immature glial cells and in the alimentary tract. The corresponding rat protein has been detected in the pancreas, small intestine, colon, and liver. The human mRNA is expressed in glioma cells, prostate, and uterus. Expression of the human protein has been detected in uterus, basophils, and mast cells.

---

Note: This product is for in vitro research use only