

EPCAM Antibody

Catalog No: #36842

Orders: order@signalwayantibody.comSupport: tech@signalwayantibody.com

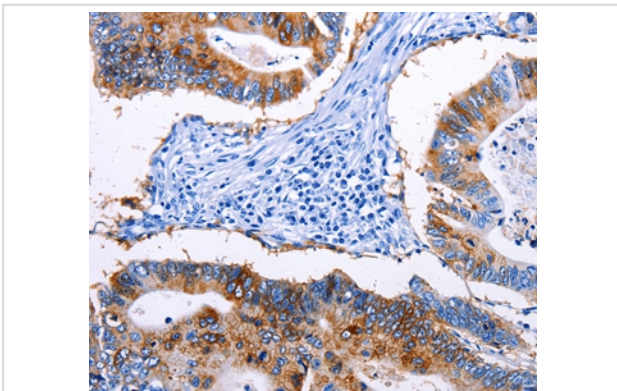
Description

Product Name	EPCAM Antibody
Host Species	Rabbit
Clonality	Polyclonal
Purification	Antigen affinity purification.
Applications	IHC
Species Reactivity	Hu
Specificity	The antibody detects endogenous levels of total EPCAM protein.
Immunogen Type	Peptide
Immunogen Description	Synthetic peptide corresponding to residues near the C terminal of human epithelial cell adhesion molecule
Target Name	EPCAM
Other Names	ESA; KSA; M4S1; MK-1; DIAR5; EGP-2; EGP40; KS1/4; MIC18; TROP1; EGP314; HNPCC8; TACSTD1
Accession No.	Swiss-Prot#: P16422NCBI Gene ID: 4072Gene Accssion: NP_002345
Uniprot	P16422
GeneID	4072;
Concentration	1.1 mg/ml
Formulation	Rabbit IgG in pH7.4 PBS, 0.05% NaN ₃ , 40% Glycerol.
Storage	Store at -20°C

Application Details

Immunohistochemistry: 1:50-1:200

Images



Immunohistochemical analysis of paraffin-embedded Human colon cancer tissue using #36842 at dilution 1/45.

Background

This gene encodes a carcinoma-associated antigen and is a member of a family that includes at least two type I membrane proteins. EpCAM is a pan-epithelial differentiation antigen that is expressed on almost all carcinomas. Its constitutional function is being elucidated. It is intricately linked with the Cadherin-Catenin pathway and hence the fundamental WNT pathway responsible for intracellular signalling and polarity. It has been used as an immunotherapeutic target in the treatment of gastrointestinal, urological and other carcinomas. It is expressed in undifferentiated pluripotent stem

cells.tufting enteropathy.

Note: This product is for in vitro research use only