

## PTGER4 Antibody

Catalog No: #36843

Orders: [order@signalwayantibody.com](mailto:order@signalwayantibody.com)Support: [tech@signalwayantibody.com](mailto:tech@signalwayantibody.com)

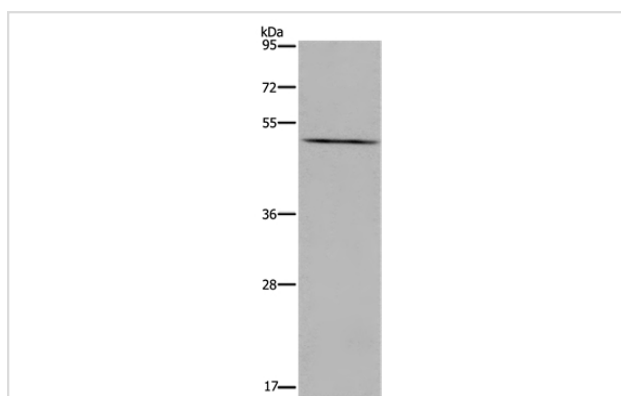
## Description

Product Name	PTGER4 Antibody
Host Species	Rabbit
Clonality	Polyclonal
Purification	Antigen affinity purification.
Applications	WB
Species Reactivity	Hu
Specificity	The antibody detects endogenous levels of total PTGER4 protein.
Immunogen Type	Peptide
Immunogen Description	Synthetic peptide corresponding to residues near the C terminal of human prostaglandin E receptor 4
Target Name	PTGER4
Other Names	EP4; EP4R
Accession No.	Swiss-Prot#: P35408NCBI Gene ID: 5734Gene Accssion: NP_000949
Uniprot	P35408
GeneID	5734;
SDS-PAGE MW	53kd
Concentration	2.6mg/ml
Formulation	Rabbit IgG in pH7.4 PBS, 0.05% NaN <sub>3</sub> , 40% Glycerol.
Storage	Store at -20°C

## Application Details

Western blotting: 1:500-1:2000

## Images



Gel: 8%SDS-PAGE  
Lysate: 40ug LoVo cell  
Primary antibody: 1/600 dilution  
Secondary antibody dilution: 1/8000  
Exposure time: 1 minute

## Background

The protein encoded by this gene is a member of the G-protein coupled receptor family. This protein is one of four receptors identified for prostaglandin E2 (PGE2). This receptor can activate T-cell factor signaling. It has been shown to mediate PGE2 induced expression of early growth

response 1 (EGR1), regulate the level and stability of cyclooxygenase-2 mRNA, and lead to the phosphorylation of glycogen synthase kinase-3. Knockout studies in mice suggest that this receptor may be involved in the neonatal adaptation of circulatory system, osteoporosis, as well as initiation of skin immune responses.

---

Note: This product is for in vitro research use only