

MAPK1/MAPK3 Antibody

Catalog No: #36846

Orders: order@signalwayantibody.com

Support: tech@signalwayantibody.com

Description

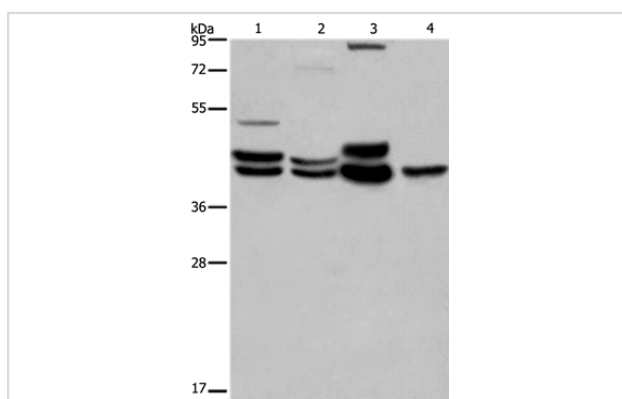
Product Name	MAPK1/MAPK3 Antibody
Host Species	Rabbit
Clonality	Polyclonal
Purification	Antigen affinity purification.
Applications	WB IHC
Species Reactivity	Hu Ms Rt
Specificity	The antibody detects endogenous levels of total MAPK1/MAPK3 protein.
Immunogen Type	Peptide
Immunogen Description	Synthetic peptide corresponding to residues near the C terminal of human mitogen-activated protein kinase 1/2
Target Name	MAPK1-MAPK3
Other Names	ERK1; ERK2; ERK1/2
Accession No.	Swiss-Prot#: P28482NCBI Gene ID: 5594Gene Accssion: NP_002736/NP_002737
Uniprot	P28482
GeneID	5594;
SDS-PAGE MW	40kd
Concentration	2.2mg/ml
Formulation	Rabbit IgG in pH7.4 PBS, 0.05% NaN ₃ , 40% Glycerol.
Storage	Store at -20°C

Application Details

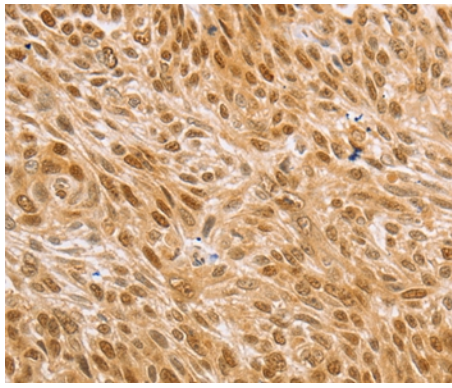
Western blotting: 1:500-1:2000

Immunohistochemistry: 1:25-1:100

Images



Gel: 10%SDS-PAGE
 Lysate: 40ug Hepg2 cell
 Primary antibody: 1/600 dilution
 Secondary antibody dilution: 1/8000
 Exposure time: 30 seconds



Immunohistochemical analysis of paraffin-embedded Human esophagus cancer tissue using #36846 at dilution 1/25.

Background

The protein encoded by this gene is a member of the MAP kinase family. MAP kinases, also known as extracellular signal-regulated kinases (ERKs), act as an integration point for multiple biochemical signals, and are involved in a wide variety of cellular processes such as proliferation, differentiation, transcription regulation and development. The activation of this kinase requires its phosphorylation by upstream kinases. Upon activation, this kinase translocates to the nucleus of the stimulated cells, where it phosphorylates nuclear targets. Two alternatively spliced transcript variants encoding the same protein, but differing in the UTRs, have been reported for this gene.

Note: This product is for in vitro research use only