

## glyoxalase I antibody

Catalog No: #22161

Orders: order@signalwayantibody.com

Support: tech@signalwayantibody.com

## Description

Product Name	glyoxalase I antibody
Host Species	Rabbit
Clonality	Polyclonal
Purification	Purified by antigen-affinity chromatography.
Applications	WB IHC IF
Species Reactivity	Hu
Immunogen Type	Recombinant protein
Immunogen Description	Recombinant protein fragment contain a sequence corresponding to a region within amino acids 1 and 171 of glyoxalase I
Target Name	glyoxalase I
Accession No.	Swiss-Prot:Q04760Gene ID:2739
Uniprot	Q04760
GeneID	2739;
Concentration	1mg/ml
Formulation	Supplied in 0.1M Tris-buffered saline with 10% Glycerol (pH7.0). 0.01% Thimerosal was added as a preservative.
Storage	Store at -20°C for long term preservation (recommended). Store at 4°C for short term use.

## Application Details

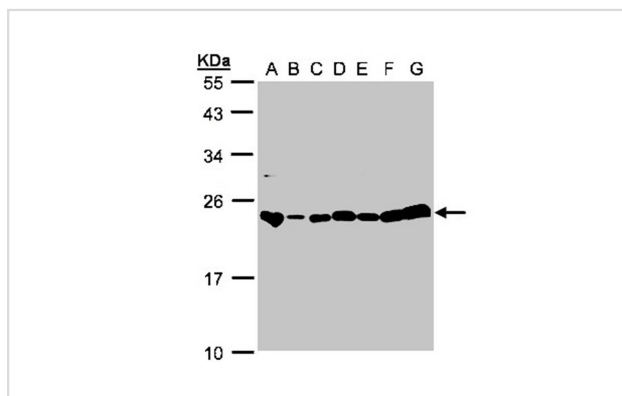
Predicted MW: 21kd

Western blotting: 1:500-1:3000

Immunohistochemistry: 1:100-1:250

Immunofluorescence: 1:100-1:200

## Images



Sample(30ug whole cell lysate)

A: 293T

B: A431

C: H1299

D: HeLa S3

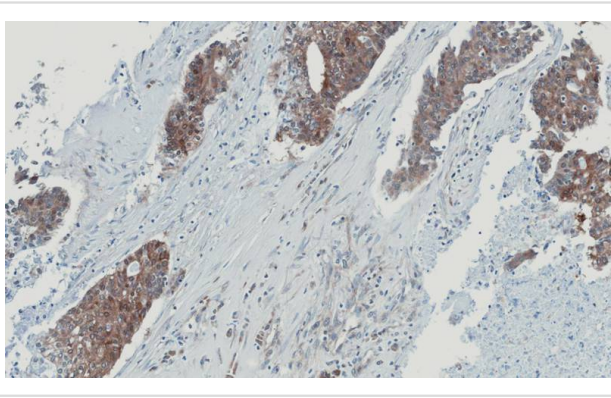
E: Hep G2

F: MOLT4

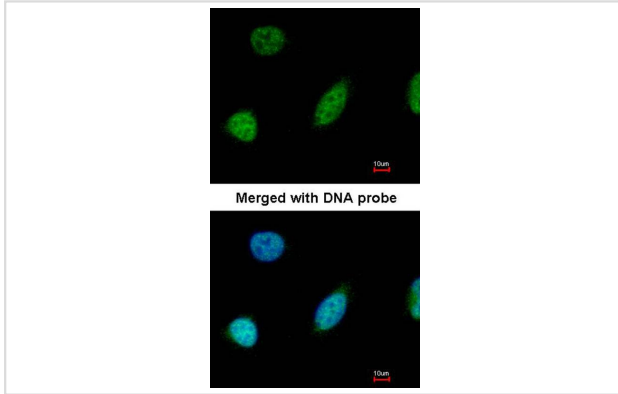
G: Raji

12% SDS PAGE

Primary antibody diluted at 1: 1000



Immunohistochemical analysis of paraffin-embedded OVCA, using GLO1 antibody at 1: 100 dilution.



Immunofluorescence analysis of paraformaldehyde-fixed HeLa, using glyoxalase I antibody at 1: 200 dilution.

## Background

The enzyme encoded by this gene is responsible for the catalysis and formation of S-lactoyl-glutathione from methylglyoxal condensation and reduced glutathione. Glyoxalase I is linked to HLA and is localized to 6p21.3-p21.1, between HLA and the centromere. [provided by RefSeq]

Note: This product is for in vitro research use only