

FOXF2 Antibody

Catalog No: #36859

Orders: order@signalwayantibody.com

Support: tech@signalwayantibody.com

Description

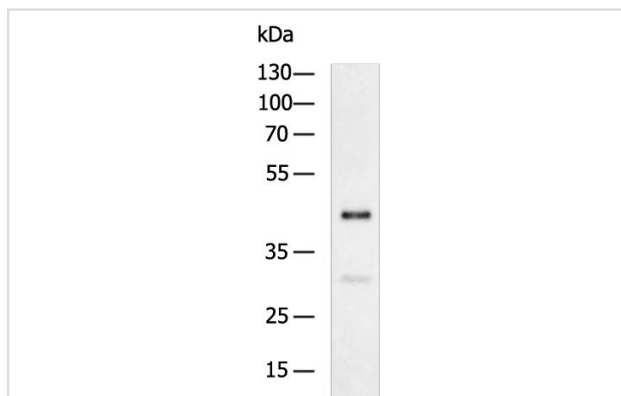
Product Name	FOXF2 Antibody
Host Species	Rabbit
Clonality	Polyclonal
Purification	Antigen affinity purification.
Applications	WB IHC
Species Reactivity	Hu Ms
Specificity	The antibody detects endogenous levels of total FOXF2 protein.
Immunogen Type	Peptide
Immunogen Description	Synthetic peptide of human FOXF2
Target Name	FOXF2
Other Names	FKHL6; FREAC2; FREAC-2
Accession No.	Swiss-Prot#: Q12947NCBI Gene ID: 2295Gene Accssion: NP_001443/Q12947
Uniprot	Q12947
GeneID	2295;
SDS-PAGE MW	46kd
Concentration	1.0 mg/ml
Formulation	Rabbit IgG in pH7.4 PBS, 0.05% NaN ₃ , 40% Glycerol.
Storage	Store at -20°C

Application Details

WB 1:500-5000

IHC 1:100-200

Images



Gel: 8%SDS-PAGE

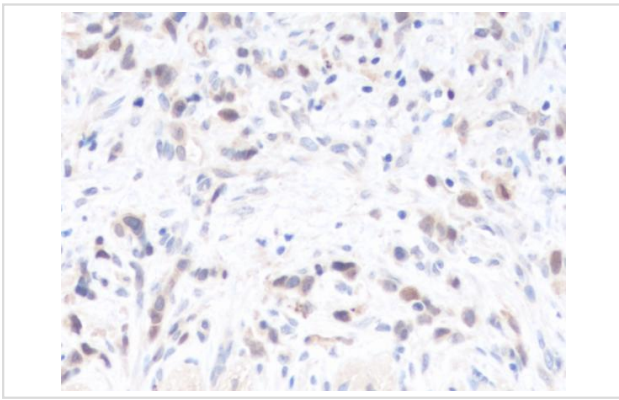
Lysate: 10 ug

Lane : Mouse small intestines tissue lysate

Primary antibody: (FOXF2 Antibody) at dilution 1/800

Secondary antibody: (HRP-conjugated Goat anti rabbit IgG) at 1/20000 dilution

Exposure time: 10 seconds (Detected by Chemiluminescence Imager)



The image is immunohistochemistry of paraffin-embedded Human gastric cancer tissue using (FOXF2 Antibody) at dilution 1/100. (Original magnification: \times 200)

Background

FOXF2 encodes forkhead box F2, one of many human homologues of the *Drosophila melanogaster* transcription factor forkhead. FOXF2 is expressed in lung and placenta, and has been shown to transcriptionally activate several lung-specific genes.

Note: This product is for in vitro research use only