

FOX E1 Antibody

Catalog No: #36866

Orders: order@signalwayantibody.com

Support: tech@signalwayantibody.com

Description

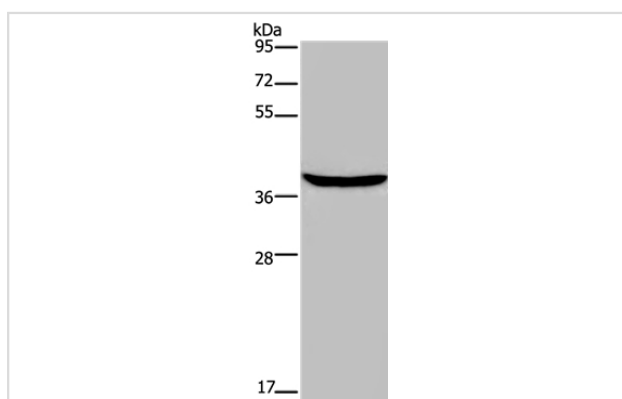
Product Name	FOX E1 Antibody
Host Species	Rabbit
Clonality	Polyclonal
Purification	Antigen affinity purification.
Applications	WB IHC
Species Reactivity	Hu Ms
Specificity	The antibody detects endogenous levels of total FOX E1 protein.
Immunogen Type	Peptide
Immunogen Description	Synthetic peptide corresponding to residues near the C terminal of human forkhead box E1 (thyroid transcription factor 2)
Target Name	FOX E1
Other Names	TTF2; FOX E2; HFKH4; HFKL5; TITF2; TTF-2; FKHL15
Accession No.	Swiss-Prot#: O00358NCBI Gene ID: 2304Gene Accssion: NP_004464
Uniprot	O00358
GeneID	2304;
SDS-PAGE MW	38kd
Concentration	1.8mg/ml
Formulation	Rabbit IgG in pH7.4 PBS, 0.05% NaN ₃ , 40% Glycerol.
Storage	Store at -20°C

Application Details

Western blotting: 1:200-1:1000

Immunohistochemistry: 1:25-1:100

Images



Gel: 8%SDS-PAGE

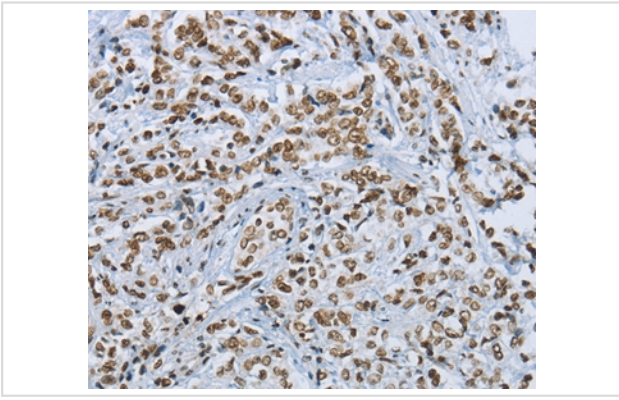
Lysates (from left to right): Mouse skeletal muscle tissue

Amount of lysate: 40ug per lane

Primary antibody: 1/300 dilution

Secondary antibody dilution: 1/8000

Exposure time: 2 minutes



Immunohistochemical analysis of paraffin-embedded Human prostate cancer tissue using #36866 at dilution 1/25.

Background

This intronless gene belongs to the forkhead family of transcription factors, which is characterized by a distinct forkhead domain. This gene functions as a thyroid transcription factor which likely plays a crucial role in thyroid morphogenesis. Mutations in this gene are associated with congenital hypothyroidism and cleft palate with thyroid dysgenesis. The map localization of this gene suggests it may also be a candidate gene for squamous cell epithelioma and hereditary sensory neuropathy type I.?

Note: This product is for in vitro research use only