

## FOXL2 Antibody

Catalog No: #36868

Orders: order@signalwayantibody.com

Support: tech@signalwayantibody.com

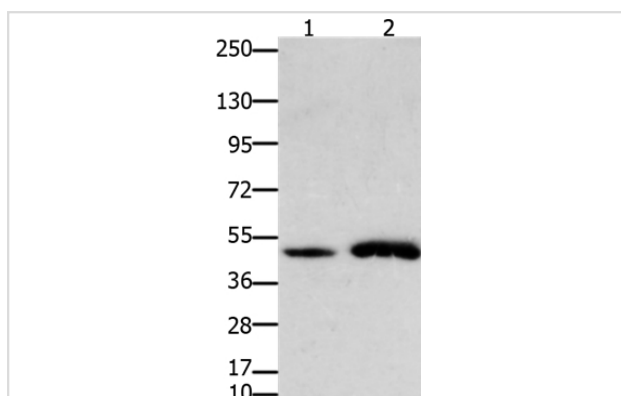
## Description

Product Name	FOXL2 Antibody
Host Species	Rabbit
Clonality	Polyclonal
Purification	Antigen affinity purification.
Applications	WB
Species Reactivity	Hu Ms
Specificity	The antibody detects endogenous levels of total FOXL2 protein.
Immunogen Type	Peptide
Immunogen Description	Synthetic peptide corresponding to a region derived from internal residues of human forkhead box L2
Target Name	FOXL2
Other Names	BPES; PFRK; POF3; BPES1; PINTO
Accession No.	Swiss-Prot#: P58012NCBI Gene ID: 668Gene Accssion: NP_075555
Uniprot	P58012
GeneID	668;
SDS-PAGE MW	50kd
Concentration	1.5mg/ml
Formulation	Rabbit IgG in pH7.4 PBS, 0.05% NaN <sub>3</sub> , 40% Glycerol.
Storage	Store at -20°C

## Application Details

Western blotting: 1:500-1:2000

## Images



Gel: 10%SDS-PAGE

Lysates (from left to right): Mouse brain and heart tissue

Amount of lysate: 40ugug per lane

Primary antibody: 1/750 dilution

Secondary antibody dilution: 1/8000

Exposure time: 30 seconds

## Background

This gene encodes a forkhead transcription factor. The protein contains a fork-head DNA-binding domain and may play a role in ovarian development and function. Mutations in this gene are a cause of blepharophimosis syndrome and premature ovarian failure 3. Critical factor essential for ovary

differentiation and maintenance, and repression of the genetic program for somatic testis determination. Prevents trans-differentiation of ovary to testis through transcriptional repression of the Sertoli cell-promoting gene SOX9. Activates SIRT1 transcription under cellular stress conditions. Activates transcription of OSR2.

---

Note: This product is for in vitro research use only