

## FOXO1 Antibody

Catalog No: #36870

Orders: [order@signalwayantibody.com](mailto:order@signalwayantibody.com)Support: [tech@signalwayantibody.com](mailto:tech@signalwayantibody.com)

## Description

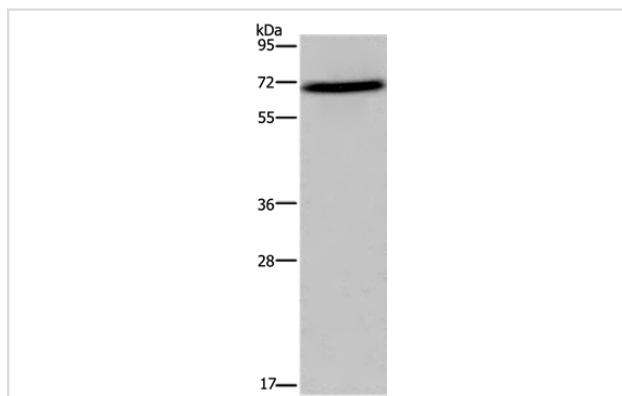
Product Name	FOXO1 Antibody
Host Species	Rabbit
Clonality	Polyclonal
Purification	Antigen affinity purification.
Applications	WB IHC
Species Reactivity	Hu Ms Rt
Specificity	The antibody detects endogenous levels of total FOXO1 protein.
Immunogen Type	Peptide
Immunogen Description	Synthetic peptide corresponding to a region derived from internal residues of human forkhead box O1
Target Name	FOXO1
Other Names	FKH1; FKHR; FOXO1A
Accession No.	Swiss-Prot#: Q12778NCBI Gene ID: 2308Gene Accssion: NP_002006
Uniprot	Q12778
GeneID	2308;
SDS-PAGE MW	70kd
Concentration	1.9mg/ml
Formulation	Rabbit IgG in pH7.4 PBS, 0.05% NaN <sub>3</sub> , 40% Glycerol.
Storage	Store at -20°C

## Application Details

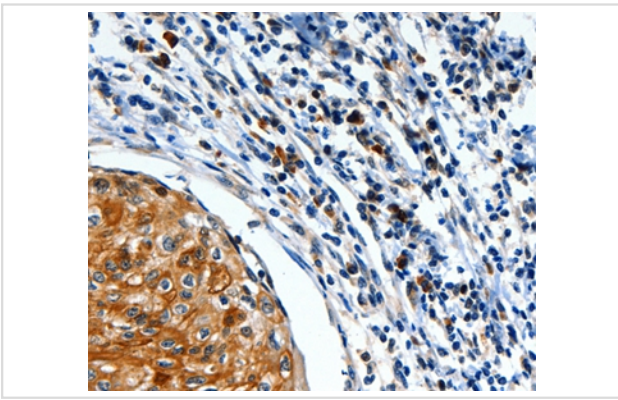
Western blotting: 1:500-1:2000

Immunohistochemistry: 1:50-1:200

## Images



Gel: 8%SDS-PAGE  
Lysate: 40ug HT-29 cell  
Primary antibody: 1/500 dilution  
Secondary antibody dilution: 1/8000  
Exposure time: 2 minutes



Immunohistochemical analysis of paraffin-embedded Human thyroid cancer tissue using #36870 at dilution 1/30.

## Background

This gene belongs to the forkhead family of transcription factors which are characterized by a distinct forkhead domain. The specific function of this gene has not yet been determined; however, it may play a role in myogenic growth and differentiation. Translocation of this gene with PAX3 has been associated with alveolar rhabdomyosarcoma.

Note: This product is for in vitro research use only