

## TRPM1 Antibody

Catalog No: #36874

Orders: [order@signalwayantibody.com](mailto:order@signalwayantibody.com)Support: [tech@signalwayantibody.com](mailto:tech@signalwayantibody.com)

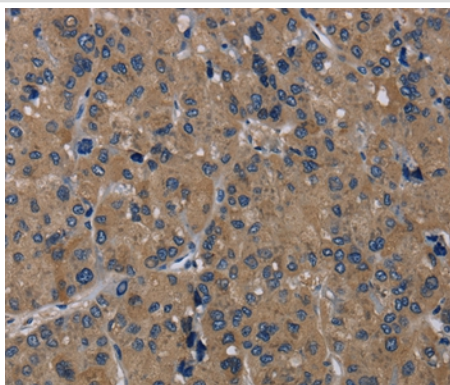
## Description

Product Name	TRPM1 Antibody
Host Species	Rabbit
Clonality	Polyclonal
Purification	Antigen affinity purification.
Applications	IHC
Species Reactivity	Hu Ms
Specificity	The antibody detects endogenous levels of total TRPM1 protein.
Immunogen Type	Peptide
Immunogen Description	Synthetic peptide corresponding to a region derived from internal residues of human transient receptor potential cation channel, subfamily M, member 1
Target Name	TRPM1
Other Names	MLSN1; CSNB1C; LTRPC1
Accession No.	Swiss-Prot#: Q7Z4N2 NCBI Gene ID: 4308Gene Accssion: NP_002411/Q7Z4N2
Uniprot	Q7Z4N2
GeneID	4308;
Concentration	1.2mg/ml
Formulation	Rabbit IgG in pH7.4 PBS, 0.05% NaN <sub>3</sub> , 40% Glycerol.
Storage	Store at -20°C

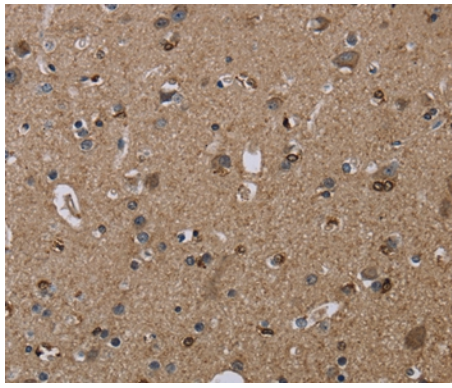
## Application Details

Immunohistochemistry: 1:25-1:100

## Images



Immunohistochemical analysis of paraffin-embedded Human liver cancer tissue using #36874 at dilution 1/20.



Immunohistochemical analysis of paraffin-embedded Human brain tissue using #36874 at dilution 1/20.

## Background

This gene encodes a member of the transient receptor potential melastatin subfamily of transient receptor potential ion channels. The encoded protein is a calcium permeable cation channel that is expressed in melanocytes and may play a role in melanin synthesis. Specific mutations in this gene are the cause autosomal recessive complete congenital stationary night blindness-1C. The expression of this protein is inversely correlated with melanoma aggressiveness and as such it is used as a prognostic marker for melanoma metastasis.

Note: This product is for in vitro research use only