

SLC9A3 Antibody

Catalog No: #36875

Orders: order@signalwayantibody.comSupport: tech@signalwayantibody.com

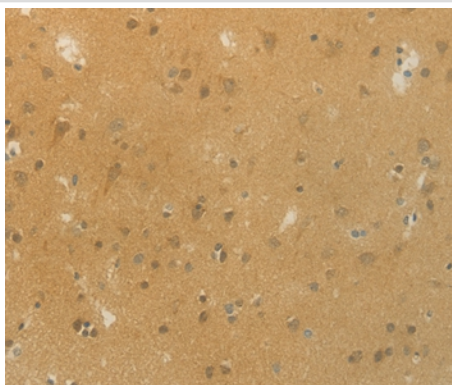
Description

Product Name	SLC9A3 Antibody
Host Species	Rabbit
Clonality	Polyclonal
Purification	Antigen affinity purification.
Applications	IHC
Species Reactivity	Hu
Specificity	The antibody detects endogenous levels of total SLC9A3 protein.
Immunogen Type	Peptide
Immunogen Description	Synthetic peptide corresponding to a region derived from internal residues of human Solute carrier family 9, subfamily A (NHE3, cation proton antiporter 3), member 3
Target Name	SLC9A3
Other Names	NHE3
Accession No.	Swiss-Prot#: P48764NCBI Gene ID: 6550Gene Accssion: NP_004165
Uniprot	P48764
GeneID	6550;
Concentration	0.5mg/ml
Formulation	Rabbit IgG in pH7.4 PBS, 0.05% NaN ₃ , 40% Glycerol.
Storage	Store at -20°C

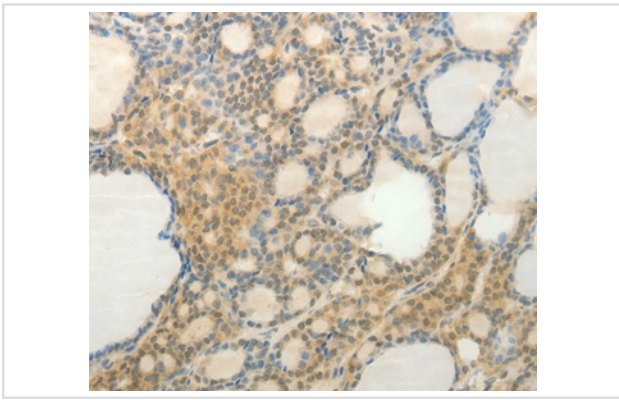
Application Details

Immunohistochemistry: 1:25-1:100

Images



Immunohistochemical analysis of paraffin-embedded Human brain tissue using #36875 at dilution 1/20.



Immunohistochemical analysis of paraffin-embedded Human thyroid cancer tissue using #36875 at dilution 1/20.

Background

Involved in pH regulation to eliminate acids generated by active metabolism or to counter adverse environmental conditions. Major proton extruding system driven by the inward sodium ion chemical gradient. Plays an important role in signal transduction. Binds SLC9A3R1 and SLC9A3R2. Interacts with CHP1, CHP2 and SHANK2. Interacts with PDZD3 and interactions decrease in response to elevated calcium ion levels

Note: This product is for in vitro research use only