

GAD2 Antibody

Catalog No: #36879

Orders: order@signalwayantibody.comSupport: tech@signalwayantibody.com

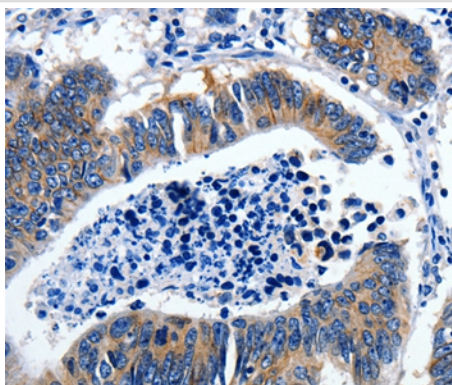
Description

Product Name	GAD2 Antibody
Host Species	Rabbit
Clonality	Polyclonal
Purification	Antigen affinity purification.
Applications	IHC
Species Reactivity	Hu
Specificity	The antibody detects endogenous levels of total GAD2 protein.
Immunogen Type	Peptide
Immunogen Description	Synthetic peptide corresponding to a region derived from internal residues of human glutamate decarboxylase 2 (pancreatic islets and brain, 65kDa)
Target Name	GAD2
Other Names	GAD65
Accession No.	Swiss-Prot#: Q05329NCBI Gene ID: 2572Gene Accssion: NP_000809
Uniprot	Q05329
GeneID	2572;
Concentration	1.7mg/ml
Formulation	Rabbit IgG in pH7.4 PBS, 0.05% NaN ₃ , 40% Glycerol.
Storage	Store at -20°C

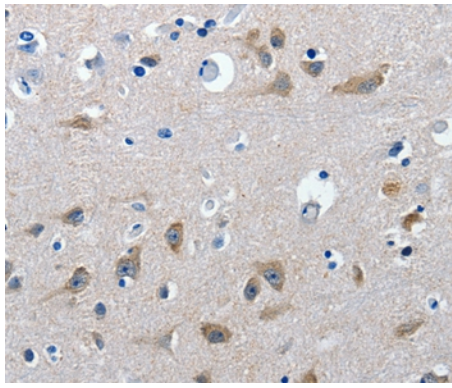
Application Details

Immunohistochemistry: 1:25-1:100

Images



Immunohistochemical analysis of paraffin-embedded Human colon cancer tissue using #36879 at dilution 1/30.



Immunohistochemical analysis of paraffin-embedded Human brain tissue using #36879 at dilution 1/30.

Background

This gene encodes one of several forms of glutamic acid decarboxylase, identified as a major autoantigen in insulin-dependent diabetes. The enzyme encoded is responsible for catalyzing the production of gamma-aminobutyric acid from L-glutamic acid. A pathogenic role for this enzyme has been identified in the human pancreas since it has been identified as an autoantibody and an autoreactive T cell target in insulin-dependent diabetes. This gene may also play a role in the stiff man syndrome. Alternative splicing results in multiple transcript variants that encode the same protein.

Note: This product is for in vitro research use only