

CXCR3 Antibody

Catalog No: #36881

Orders: order@signalwayantibody.comSupport: tech@signalwayantibody.com

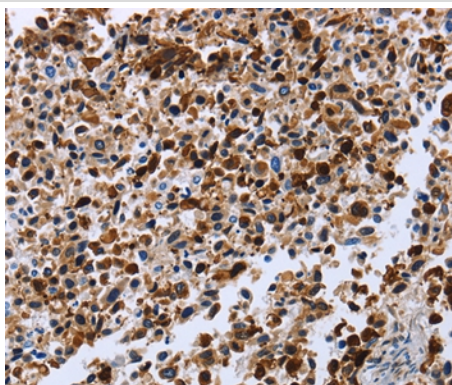
Description

| | |
|-----------------------|---|
| Product Name | CXCR3 Antibody |
| Host Species | Rabbit |
| Clonality | Polyclonal |
| Purification | Antigen affinity purification. |
| Applications | IHC |
| Species Reactivity | Hu |
| Specificity | The antibody detects endogenous levels of total CXCR3 protein. |
| Immunogen Type | Peptide |
| Immunogen Description | Synthetic peptide corresponding to residues near the C terminal of human chemokine (C-X-C motif) receptor 3 |
| Target Name | CXCR3 |
| Other Names | GPR9; MigR; CD182; CD183; Mig-R; CKR-L2; CMKAR3; IP10-R |
| Accession No. | Swiss-Prot#: P49682NCBI Gene ID: 2833Gene Accssion: NP_001495 |
| Uniprot | P49682 |
| GeneID | 2833; |
| Concentration | 1mg/ml |
| Formulation | Rabbit IgG in pH7.4 PBS, 0.05% NaN ₃ , 40% Glycerol. |
| Storage | Store at -20°C |

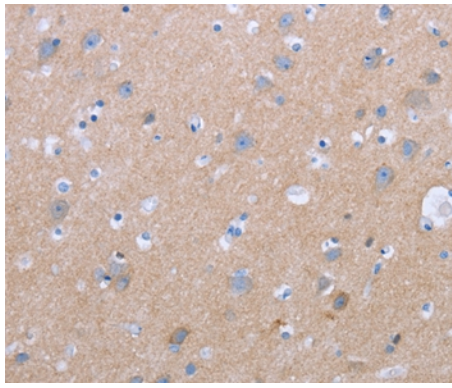
Application Details

Immunohistochemistry: 1:25-1:100

Images



Immunohistochemical analysis of paraffin-embedded Human lung cancer tissue using #36881 at dilution 1/20.



Immunohistochemical analysis of paraffin-embedded Human brain tissue using #36881 at dilution 1/20.

Background

This gene encodes a G protein-coupled receptor with selectivity for three chemokines, termed CXCL9/Mig (monokine induced by interferon-g), CXCL10/IP10 (interferon-g-inducible 10 kDa protein) and CXCL11/I-TAC (interferon-inducible T cell a-chemoattractant). Binding of chemokines to this protein induces cellular responses that are involved in leukocyte traffic, most notably integrin activation, cytoskeletal changes and chemotactic migration. Alternatively spliced transcript variants encoding different isoforms have been found for this gene. One of the isoforms (CXCR3-B) shows high affinity binding to chemokine, CXCL4/PF4.

Note: This product is for in vitro research use only