

MSTN Antibody

Catalog No: #36897

Orders: order@signalwayantibody.comSupport: tech@signalwayantibody.com

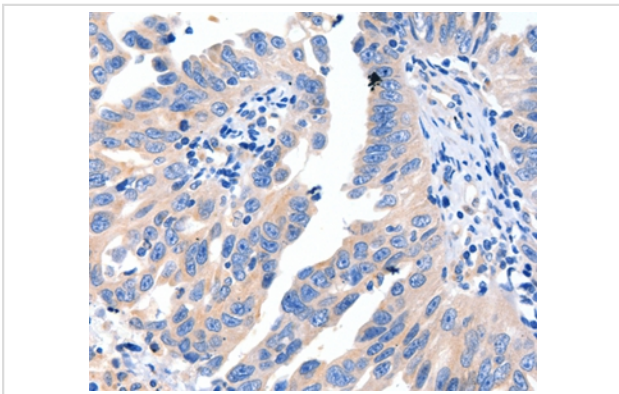
Description

Product Name	MSTN Antibody
Host Species	Rabbit
Clonality	Polyclonal
Purification	Antigen affinity purification.
Applications	IHC
Species Reactivity	Hu Ms Rt
Specificity	The antibody detects endogenous levels of total MSTN protein.
Immunogen Type	Peptide
Immunogen Description	Synthetic peptide corresponding to a region derived from internal residues of human myostatin
Target Name	MSTN
Other Names	GDF8; MSLHP
Accession No.	Swiss-Prot#: O14793NCBI Gene ID: 2660Gene Accssion: NP_005250
Uniprot	O14793
GeneID	2660;
Concentration	0.3mg/ml
Formulation	Rabbit IgG in pH7.4 PBS, 0.05% NaN ₃ , 40% Glycerol.
Storage	Store at -20°C

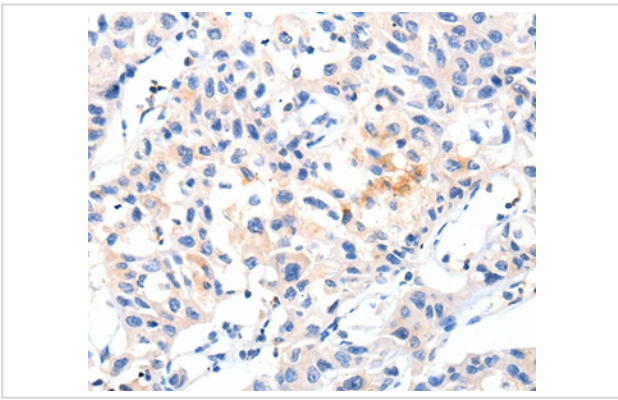
Application Details

Immunohistochemistry: 1:5-1:20

Images



Immunohistochemical analysis of paraffin-embedded Human breast cancer tissue using #36897 at dilution 1/8.



Immunohistochemical analysis of paraffin-embedded Human lung cancer tissue using #36897 at dilution 1/8.

Background

The protein encoded by this gene is a member of the bone morphogenetic protein (BMP) family and the TGF-beta superfamily. This group of proteins is characterized by a polybasic proteolytic processing site which is cleaved to produce a mature protein containing seven conserved cysteine residues. The members of this family are regulators of cell growth and differentiation in both embryonic and adult tissues. This gene is thought to encode a secreted protein which negatively regulates skeletal muscle growth.

Note: This product is for in vitro research use only