

## SLC2A1 Antibody

Catalog No: #36901

Orders: order@signalwayantibody.com

Support: tech@signalwayantibody.com

## Description

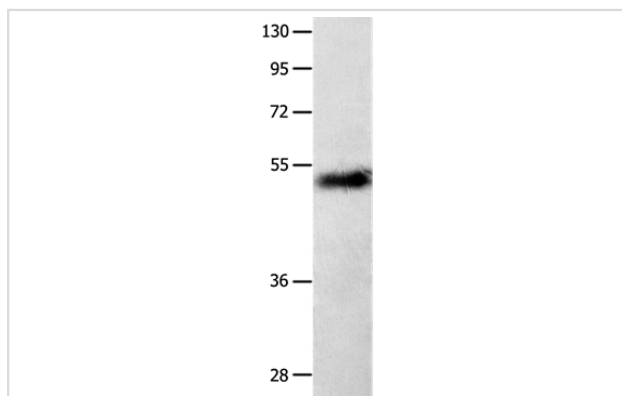
Product Name	SLC2A1 Antibody
Host Species	Rabbit
Clonality	Polyclonal
Purification	Antigen affinity purification.
Applications	WB IHC
Species Reactivity	Hu
Specificity	The antibody detects endogenous levels of total SLC2A1 protein.
Immunogen Type	Peptide
Immunogen Description	Synthetic peptide corresponding to residues near the N terminal of human solute carrier family 2 (facilitated glucose transporter), member 1
Target Name	SLC2A1
Other Names	PED; DYT9; GLUT; DYT17; DYT18; EIG12; GLUT1; GLUT1DS
Accession No.	Swiss-Prot#: P11166NCBI Gene ID: 6513Gene Accssion: NP_006507
Uniprot	P11166
GeneID	6513;
SDS-PAGE MW	54kd
Concentration	1.7mg/ml
Formulation	Rabbit IgG in pH7.4 PBS, 0.05% NaN <sub>3</sub> , 40% Glycerol.
Storage	Store at -20°C

## Application Details

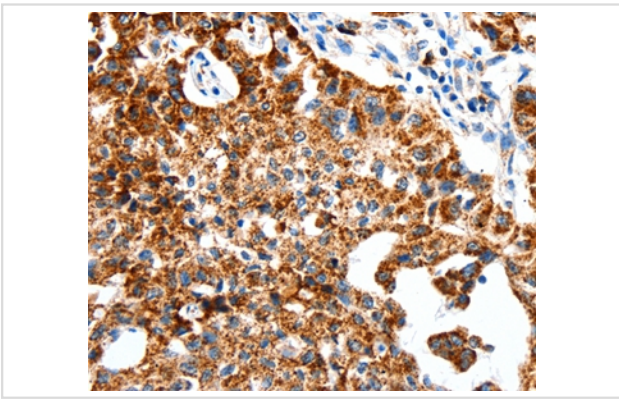
Western blotting: 1:500-1:2000

Immunohistochemistry: 1:50-1:200

## Images



Gel: 10%SDS-PAGE  
 Lysates (from left to right): Human seminoma tissue  
 Amount of lysate: 40ug per lane  
 Primary antibody: 1/850 dilution  
 Secondary antibody dilution: 1/8000  
 Exposure time: 10 minutes



Immunohistochemical analysis of paraffin-embedded Human lung cancer tissue using #36901 at dilution 1/50.

## Background

This gene encodes a major glucose transporter in the mammalian blood-brain barrier. Mutations in this gene have been found in a family with paroxysmal exertion-induced dyskinesia. Facilitative glucose transporter. This isoform may be responsible for constitutive or basal glucose uptake. Has a very broad substrate specificity; can transport a wide range of aldoses including both pentoses and hexoses.

Note: This product is for in vitro research use only