

## ADRBK1 Antibody

Catalog No: #36916

Orders: [order@signalwayantibody.com](mailto:order@signalwayantibody.com)Support: [tech@signalwayantibody.com](mailto:tech@signalwayantibody.com)

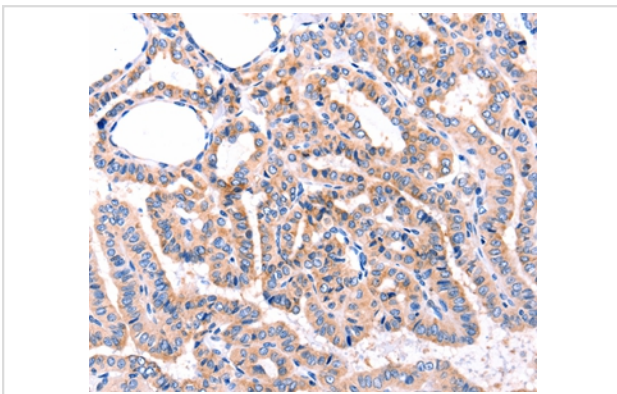
## Description

Product Name	ADRBK1 Antibody
Host Species	Rabbit
Clonality	Polyclonal
Purification	Antigen affinity purification.
Applications	IHC
Species Reactivity	Hu Ms Rt
Specificity	The antibody detects endogenous levels of total ADRBK1 protein.
Immunogen Type	Peptide
Immunogen Description	Synthetic peptide corresponding to a region derived from internal residues of human adrenergic, beta, receptor kinase 1
Target Name	ADRBK1
Other Names	GRK2; BARK1; BETA-ARK1
Accession No.	Swiss-Prot#: P25098NCBI Gene ID: 156Gene Accssion: NP_001610
Uniprot	P25098
GeneID	156;
Concentration	3.5mg/ml
Formulation	Rabbit IgG in pH7.4 PBS, 0.05% NaN <sub>3</sub> , 40% Glycerol.
Storage	Store at -20°C

## Application Details

Immunohistochemistry: 1:100-1:300

## Images



Immunohistochemical analysis of paraffin-embedded Human thyroid cancer tissue using #36916 at dilution 1/87.

## Background

The product of this gene phosphorylates the beta-2-adrenergic receptor and appears to mediate agonist-specific desensitization observed at high agonist concentrations. This protein is an ubiquitous cytosolic enzyme that specifically phosphorylates the activated form of the beta-adrenergic and

related G-protein-coupled receptors. Abnormal coupling of beta-adrenergic receptor to G protein is involved in the pathogenesis of the failing heart.

---

Note: This product is for in vitro research use only