

## GCH1 Antibody

Catalog No: #36919

Orders: [order@signalwayantibody.com](mailto:order@signalwayantibody.com)Support: [tech@signalwayantibody.com](mailto:tech@signalwayantibody.com)

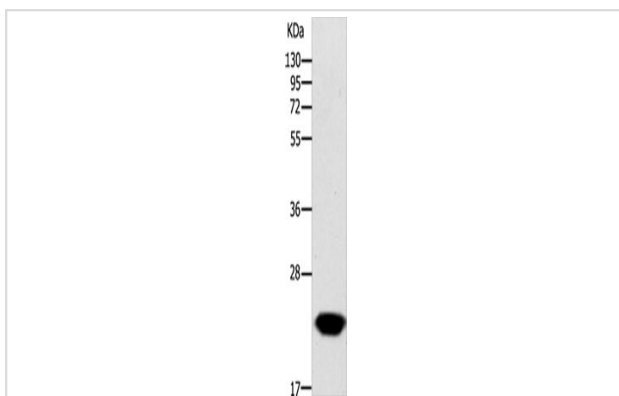
## Description

Product Name	GCH1 Antibody
Host Species	Rabbit
Clonality	Polyclonal
Purification	Antigen affinity purification.
Applications	WB IHC
Species Reactivity	Hu
Specificity	The antibody detects endogenous levels of GCH1 protein.
Immunogen Type	Peptide
Immunogen Description	Synthetic peptide of human GCH1
Target Name	GCH1
Other Names	GCH; DYT5; DYT14; DYT5a; GTPCH1; HPABH4B; GTP-CH-1
Accession No.	Swiss-Prot#: P30793NCBI Gene ID: 2643Gene Accssion: NP_000152
Uniprot	P30793
GeneID	2643;
SDS-PAGE MW	28kd
Concentration	0.3mg/ml
Formulation	Rabbit IgG in pH7.4 PBS, 0.05% NaN <sub>3</sub> , 40% Glycerol.
Storage	Store at -20°C

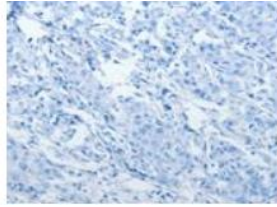
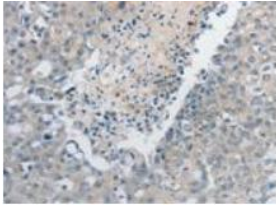
## Application Details

WB 1:500-1:2000 IHC 1:5-1:20

## Images



Gel: 12%SDS-PAGE  
Lysate: 60 ug  
Lane: Human fetal liver tissue  
Primary antibody: at dilution 1/200  
Secondary antibody: at 1/8000 dilution  
Exposure time: 15 seconds



The image on the left is immunohistochemistry of paraffin-embedded Human breast cancer tissue at dilution 1/15, on the right is treated with synthetic peptide. (Original magnification: 200)

## Background

This gene encodes a member of the GTP cyclohydrolase family. The encoded protein is the first and rate-limiting enzyme in tetrahydrobiopterin (BH<sub>4</sub>) biosynthesis, catalyzing the conversion of GTP into 7,8-dihydroneopterin triphosphate. BH<sub>4</sub> is an essential cofactor required by aromatic amino acid hydroxylases as well as nitric oxide synthases. Mutations in this gene are associated with malignant hyperphenylalaninemia and dopa-responsive dystonia. Several alternatively spliced transcript variants encoding different isoforms have been described; however, not all variants give rise to a functional enzyme.

Note: This product is for in vitro research use only