

HCN2 Antibody

Catalog No: #36922

Orders: order@signalwayantibody.comSupport: tech@signalwayantibody.com

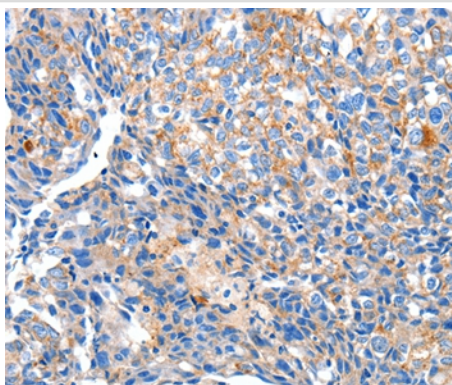
Description

Product Name	HCN2 Antibody
Host Species	Rabbit
Clonality	Polyclonal
Purification	Antigen affinity purification.
Applications	IHC
Species Reactivity	Hu
Specificity	The antibody detects endogenous levels of total HCN2 protein.
Immunogen Type	Peptide
Immunogen Description	Synthetic peptide corresponding to residues near the C terminal of human hyperpolarization activated cyclic nucleotide-gated potassium channel 2
Target Name	HCN2
Other Names	BCNG2; HAC-1; BCNG-2
Accession No.	Swiss-Prot#: Q9UL51NCBI Gene ID: 610Gene Accssion: NP_001185
Uniprot	Q9UL51
GeneID	610;
Concentration	2.7mg/ml
Formulation	Rabbit IgG in pH7.4 PBS, 0.05% NaN ₃ , 40% Glycerol.
Storage	Store at -20°C

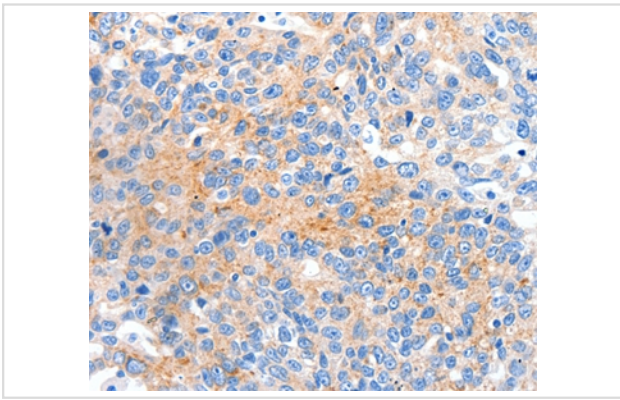
Application Details

Immunohistochemistry: 1:50-1:200

Images



Immunohistochemical analysis of paraffin-embedded Human breast cancer tissue using #36922 at dilution 1/80.



Immunohistochemical analysis of paraffin-embedded Human lung cancer tissue using #36922 at dilution 1/80.

Background

Hyperpolarization-activated cation channels of the HCN gene family, such as HCN2, contribute to spontaneous rhythmic activity in both heart and brain. Hyperpolarization-activated ion channel exhibiting weak selectivity for potassium over sodium ions. Contributes to the native pacemaker currents in heart (I_f) and in neurons (I_h). Produces a large instantaneous current. Activated by cAMP. Modulated by intracellular chloride ions and pH; acidic pH shifts the activation to more negative voltages.

Note: This product is for in vitro research use only